



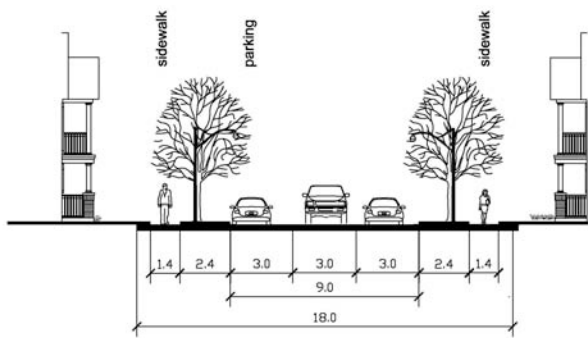
**Urban Design and Architectural
Guidelines**

Urban Design + Architectural Guidelines

- **Design Guidelines for the Public Realm**
 - Roads
 - Parks + Open Space
 - Gateways
 - Trails
 - Storm Water Management Ponds
- **Design Guidelines for the Private Realm**
 - Residential Building Types
 - Public/Institutional Buildings
 - Commercial Mixed-Use Buildings
 - Green Building Technology
- **Design Guidelines for Nashville Village**

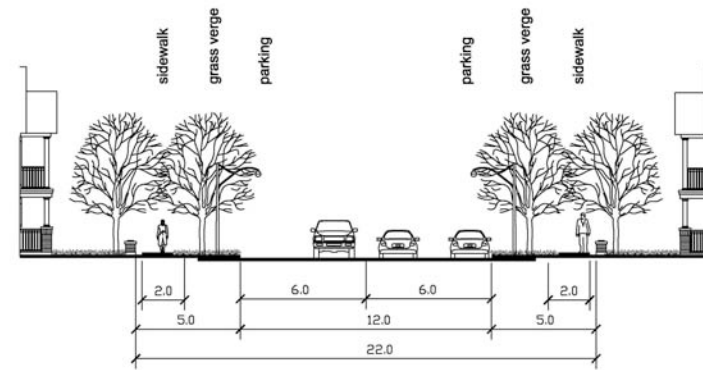
Roads

- Collector Roads
- Local Roads
- Lanes
- Green Streets
- Traffic Circles



Local Road

Local Road

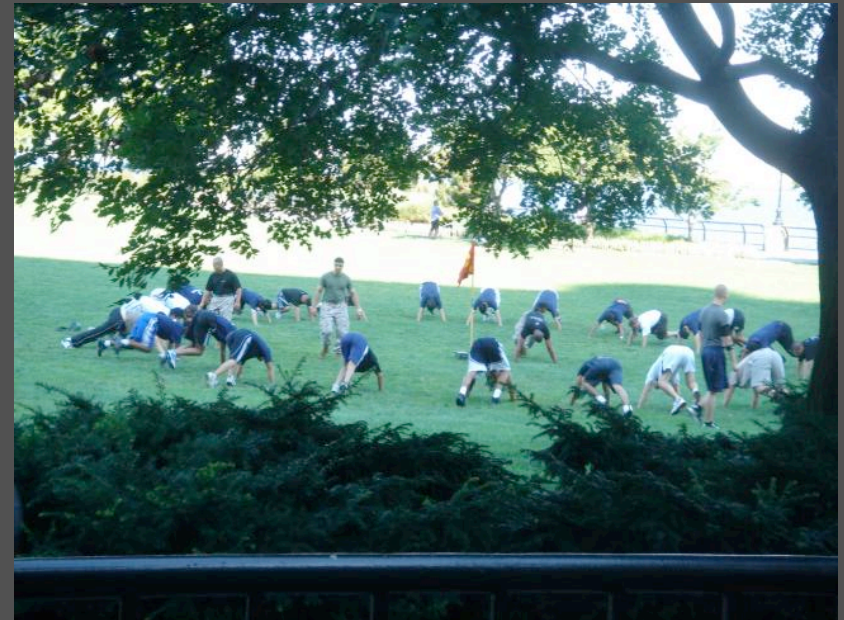


22m ROW

Collector Road

Parks & Open Space

- Natural Heritage Features
- Community Parks
- Neighbourhood Parks
- Parkettes



Gateways

- Enhanced Landscaping
- Gateway Features
- Decorative Fencing

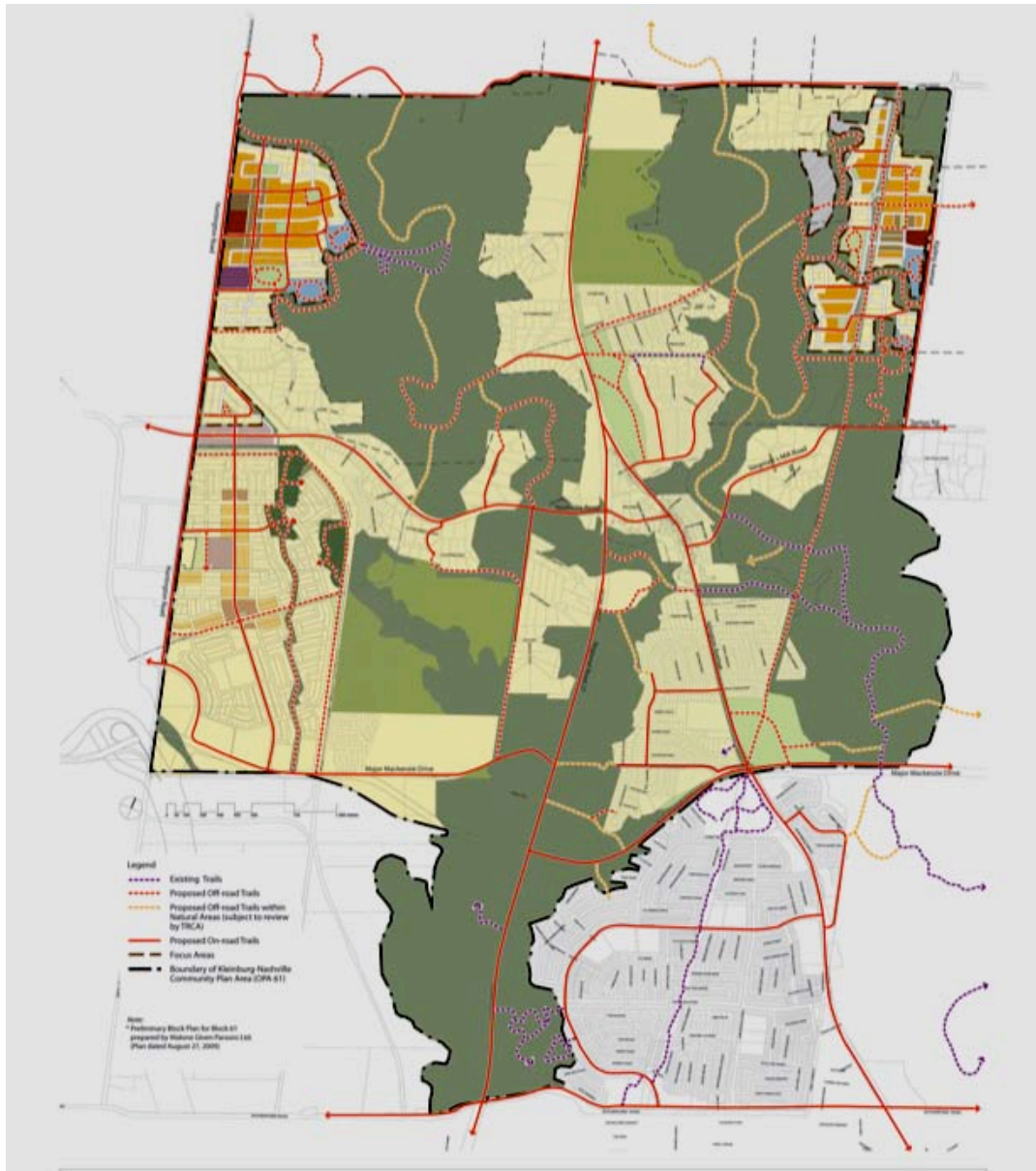


Trails System

- Within Natural Features
- Open Space and Parks
- Road System – Sidewalks and bicycle Paths



Overall Trails Plan



Storm Water Management Facilities

- Integral Part of Greenland System and Trails Network
- Key Community Feature
- Blend with Natural Landscape



Residential Building Types

- Development Blocks and Lots
- Priority Lots
- Built Form for Semi-detached, Detached, Townhouse and Apartment Units
- Architectural Features



Public Institutional Buildings

- Serve as Important Landmarks for a Community
- Public/Institutional buildings shall front onto Minor or Major Collector Roads
- High Standards for Architectural design and features



Commercial/Mixed Use Buildings

- Buildings shall be of an appropriate scale to adjacent neighbourhoods
- Commercial Uses located at ground level
- Building facades treated as pedestrian areas and public spaces



Design Guidelines for Nashville Village

- Nashville's Heritage Character Statement – linked back to Heritage Conservation District Plan
- Nashville's Character Defining Elements
- Compatibility with existing architectural character and streetscapes

