

# Appendix

## Abell Avenue

18	WB	Non-Contributing
19	WB	Non-Contributing
23	WB	Contributing
24	WB	Contributing
27		Non-Contributing
28	WB	Contributing
32	WB	Contributing
33		Non-Contributing
38		Non-Contributing
41		Contributing
44		Contributing
45		Contributing
50		Non-Contributing
51		Contributing
54		Contributing
57		Non-Contributing
62		Non-Contributing
64	WB	Non-Contributing
65		Non-Contributing
71		Non-Contributing

## Armos Maynard Circle

None	WB	Non-Contributing
------	----	------------------

## Arbors Lane

100	WB	Non-Contributing
-----	----	------------------

## Burton's Lane

1	WB	Non-Contributing
3	WB	Contributing (Streetscape and Westerly Shed)

## Burwick Avenue

20	WB	Contributing
26		Non-Contributing
32		Non-Contributing
38		Contributing (Approved for Demolition)
44		Non-Contributing
60		Non-Contributing

## Chavender Street

32	WB	Non-Contributing
----	----	------------------

## Cheltenham Avenue

21	WB	Non-Contributing
22	WB	Non-Contributing
27		Non-Contributing
30		Non-Contributing
35		Non-Contributing
36		Non-Contributing
42		Non-Contributing
43		Non-Contributing
48		Non-Contributing
51		Non-Contributing
54		Contributing
57		Non-Contributing
60		Non-Contributing
65		Non-Contributing
66		Non-Contributing
71		Contributing
72		Non-Contributing
77		Non-Contributing
80		Non-Contributing
81		Non-Contributing

## Clarence Street

15	WB	Contributing (Approved for Demolition)
23	WB	Non-Contributing
30	WB	Non-Contributing (Approval for Demolition)
31	WB	Non-Contributing
36	WB	Contributing (Approved for Demolition)
43	WB	Non-Contributing
44	WB	Contributing
50	WB	Contributing
51	WB	Non-Contributing
57	WB	Non-Contributing
61	WB	Contributing
66	WB	Non-Contributing
69	WB	Contributing (Demolished)
70	WB	Contributing
77	WB	Contributing
78	WB	Non-Contributing

# LIST OF CONTRIBUTING / NON-CONTRIBUTING PROPERTIES

WB - Properties within the HCD Boundary

80	WB	Non-Contributing
83	WB	Non-Contributing
84	WB	Non-Contributing
89	WB	Contributing (Approved for Demolition)
92	WB	Non-Contributing
93	WB	Contributing
96	WB	Vacant
97	WB	Contributing
98	WB	Non-Contributing
101	WB	Contributing
102	WB	Contributing
109	WB	Contributing
110	WB	Non-Contributing
116	WB	Non-Contributing
117	WB	Contributing
124	WB	Non-Contributing
126	WB	Non-Contributing
128	WB	Non-Contributing
129	WB	Non-Contributing
130	WB	Non-Contributing
132	WB	Non-Contributing
133	WB	Non-Contributing
137	WB	Contributing
138	WB	Non-Contributing
141	WB	Contributing
153	WB	Contributing
159	WB	Contributing
163	WB	Non-Contributing
169	WB	Contributing
175	WB	Contributing
181	WB	Non-Contributing
187	WB	Contributing
Scout House		Non-Contributing
225		Non-Contributing
240	WB	Non-Contributing
249	WB	Contributing
250	WB	Contributing (Approved for Demolition)
Bridge	WB	Non-Contributing

## Fairground Lane

Town-houses	WB	Non-Contributing
-------------	----	------------------

## Islington Avenue

7961		Contributing (Demolished)
7973		Contributing
7983		Non-Contributing
8013		Non-Contributing
8025		Contributing
8045		Contributing
8050		Non-Contributing
8074		Non-Contributing
8086		Contributing
3647		Non-Contributing
8142		Contributing

## James Street

15	WB	Non-Contributing
21	WB	Contributing
27	WB	Contributing
29	WB	Non-Contributing
31	WB	Non-Contributing
33	WB	Vacant Lot
Railway	WB	Contributing

## Kipling Avenue

7790	WB	Non-Contributing
7796	WB	Non-Contributing
7800	WB	Non-Contributing
7806	WB	Contributing
7810	WB	Contributing
7814	WB	Contributing
7817	WB	Contributing
7823	WB	Non-Contributing
7826	WB	Non-Contributing
7827	WB	Contributing
7830	WB	Non-Contributing
7833	WB	Contributing
7836	WB	Non-Contributing
7837	WB	Non-Contributing
7838	WB	Non-Contributing
7844	WB	Contributing
7845	WB	Contributing
7848	WB	Contributing
7855	WB	Non-Contributing
7856	WB	Contributing

### Kipling Avenue (continued)

7862	WB	Non-Contributing	8039	WB	Contributing
7863	WB	Non-Contributing	8048	WB	Non-Contributing
7866	WB	Contributing	8060	WB	Non-Contributing
7871	WB	Non-Contributing	8065	WB	Non-Contributing
7872	WB	Contributing	8066	WB	Contributing
7876	WB	Vacant Lot	8071	WB	Contributing
7877	WB	Non-Contributing	8074	WB	Contributing
7880	WB	Contributing	8090	WB	Contributing
7883	WB	Contributing	8100	WB	Non-Contributing
7895	WB	Contributing	8101	WB	Contributing
7909	WB	Contributing	8109	WB	Contributing
7912	WB	Contributing	8127	WB	Contributing
7913	WB	Contributing (Demolished)	8135	WB	Non-Contributing
7918	WB	Non-Contributing	8143	WB	Non-Contributing
7924	WB	Contributing	8145	WB	Non-Contributing
7925	WB	Contributing (Demolished)	8158	WB	Non-Contributing
7927	WB	Contributing (Demolished)	8161	WB	Contributing
7929	WB	Contributing (Demolished)	8171	WB	Non-Contributing (Demolished)
7930	WB	Non-Contributing	8177	WB	Contributing
7933	WB	Contributing (Demolished)	8183	WB	Non-Contributing
7934	WB	Contributing	8191	WB	Contributing
7937	WB	Non-Contributing (Demolished)	8196	WB	Non-Contributing
7938	WB	Contributing	8199	WB	Non-Contributing
7944	WB	Non-Contributing	8204	WB	Contributing
7945	WB	Contributing (Demolished)	8214	WB	Non-Contributing (Roadway)
7955	WB	Contributing	8215	WB	Contributing
7960	WB	Non-Contributing	8221	WB	Contributing
7971	WB	Contributing	8222	WB	Non-Contributing
7974	WB	Contributing	8227	WB	Contributing
7981	WB	Contributing	8228	WB	Contributing
7984	WB	Contributing	8233	WB	Contributing
7985	WB	Contributing	8234	WB	Non-Contributing
7988	WB	Contributing	8237	WB	Contributing
7993	WB	Non-Contributing	8238	WB	Contributing
7994	WB	Non-Contributing	8243	WB	Contributing
8000	WB	Contributing	8246	WB	Non-Contributing
8001	WB	Contributing	8247	WB	Non-Contributing
8006	WB	Contributing	8248	WB	Contributing
8009	WB	Contributing	8251	WB	Non-Contributing
8010	WB	Non-Contributing	8255	WB	Contributing
8015	WB	Non-Contributing	8258	WB	Contributing
8018	WB	Non-Contributing	8260	WB	Non-Contributing
8026	WB	Non-Contributing	8265	WB	Contributing
8019	WB	Non-Contributing			
8026	WB	Non-Contributing			
8027	WB	Non-Contributing			
8032	WB	Non-Contributing			
8033	WB	Non-Contributing			

# LIST OF CONTRIBUTING / NON-CONTRIBUTING PROPERTIES

## Meeting House Road

11		Non-Contributing
17		Non-Contributing
23		Non-Contributing
29		Non-Contributing
41		Non-Contributing
47		Non-Contributing
53		Non-Contributing
57		Non-Contributing
65		Non-Contributing
75		Non-Contributing
79		Non-Contributing
83		Non-Contributing
93		Non-Contributing
103		Non-Contributing
111		Non-Contributing
117		Non-Contributing
121		Non-Contributing
139	WB	Non-Contributing
140	WB	Non-Contributing
141	WB	Non-Contributing
150	WB	Non-Contributing

Woodbridge Methodist Cemetery -  
WB Contributing

## Memorial Hill Drive

1	WB	Non-Contributing
---	----	------------------

## Old Firehall Lane

7-19	WB	Non-Contributing
33-down		
Townhouses	WB	Non-Contributing

## Park Drive

16	WB	Non-Contributing
20	WB	Contributing
21	WB	Non-Contributing
25	WB	Non-Contributing
26	WB	Non-Contributing
30	WB	Non-Contributing
31	WB	Non-Contributing

38	WB	Non-Contributing
40	WB	Non-Contributing
41	WB	Non-Contributing
42	WB	Non-Contributing
43	WB	Non-Contributing
45	WB	Non-Contributing
46	WB	Non-Contributing
47	WB	Non-Contributing
48	WB	Non-Contributing
49	WB	Non-Contributing
50	WB	Non-Contributing
51	WB	Non-Contributing
52	WB	Non-Contributing
53	WB	Non-Contributing
54	WB	Non-Contributing
55	WB	Non-Contributing
56	WB	Non-Contributing
58	WB	Non-Contributing

## Porter Avenue (Fairgrounds)

100	WB	Contributing
-----	----	--------------

## Rosebury Lane

14		Non-Contributing
15		Non-Contributing
18		Non-Contributing
19		Non-Contributing
22		Non-Contributing
23		Non-Contributing
26		Non-Contributing
27		Non-Contributing
30		Non-Contributing
32		Non-Contributing
36		Non-Contributing
40		Non-Contributing
44		Non-Contributing
47		Non-Contributing
48		Non-Contributing
50		Non-Contributing
51		Non-Contributing
54		Non-Contributing
55		Non-Contributing
59		Non-Contributing
60		Non-Contributing
63		Non-Contributing

### Rosebury Lane (continued)

67	Non-Contributing
71	Non-Contributing
75	Non-Contributing
79	Non-Contributing
81	Non-Contributing
85	Non-Contributing
88	Non-Contributing
91	Non-Contributing
92	Non-Contributing
95	Non-Contributing
97	Non-Contributing
100	Non-Contributing
101	Non-Contributing
103	Non-Contributing
105	Non-Contributing
107	Non-Contributing
109	Non-Contributing
110	Non-Contributing
111	Non-Contributing
113	Non-Contributing
114	Non-Contributing
117	Non-Contributing
118	Non-Contributing
121	Non-Contributing
122	Non-Contributing
134	Non-Contributing
140	Non-Contributing
146	Non-Contributing
151	Non-Contributing

### Rosewood Court

4	Non-Contributing
8	Non-Contributing
9	Non-Contributing
11	Non-Contributing
12	Non-Contributing
15	Non-Contributing
16	Non-Contributing
19	Non-Contributing
20	Non-Contributing
23	Non-Contributing

### Wallace Street

15	WB	Contributing
19	WB	Contributing
24-36	WB	Non-Contributing
43	WB	Non-Contributing (Heritage Clearance Approval achieved for Demo Permit Application)
44	WB	Contributing
49	WB	Non-Contributing (Heritage Clearance Approval achieved for Demo Permit Application)
50	WB	Contributing
56	WB	Contributing
57	WB	Contributing
65	WB	Non-Contributing (Heritage Clearance Approval achieved for Demo Permit Application)
66	WB	Contributing
73	WB	Non-Contributing (Heritage Clearance Approval achieved for Demo Permit Application)
80	WB	Contributing
81	WB	Non-Contributing
95	WB	Contributing
110	WB	Non-Contributing
118	WB	Contributing
122	WB	Non-Contributing
128	WB	Non-Contributing
138	WB	Non-Contributing
142	WB	Contributing
148	WB	Contributing
158	WB	Non-Contributing
166	WB	Contributing (Approved for Demolition)

### William Street

36	WB	Contributing
38	WB	Contributing
61	WB	Non-Contributing
66	WB	Contributing
69	WB	Contributing
72	WB	Contributing
75	WB	Non-Contributing
78	WB	Contributing
81	WB	Non-Contributing
84	WB	Contributing
Veteran's Park and Nort Johnson District Park - WB - Contributing		

# LIST OF CONTRIBUTING / NON-CONTRIBUTING PROPERTIES

## William Farr Lane

1-6 WB Non-Contributing  
 12-22 WB Non-Contributing

## Woodbridge Avenue

Woodbridge Avenue Railway Bridge - WB - Contributing

31 WB Non-Contributing  
 53 WB Non-Contributing  
 56 WB Non-Contributing  
 75 WB Non-Contributing  
 83 WB Non-Contributing  
 86 WB Contributing (Approved for Demolition)  
 93 WB Non-Contributing  
 96 WB Contributing  
 97 WB Contributing (Approved for Demolition)  
 106 WB Non-Contributing  
 108 WB Non-Contributing  
 110 WB Non-Contributing  
 112 WB Contributing (Demolished)  
 116 WB Contributing (Demolished)  
 121-131 WB Non-Contributing  
 124 WB Contributing  
 (adjacent to 124) Non-Contributing \*  
 137 WB Contributing  
 140 WB Non-Contributing  
 141 WB Non-Contributing  
 Public Park WB Contributing  
 145 WB Non-Contributing  
 150 WB Contributing  
 153 WB Non-Contributing  
 154 WB Non-Contributing  
 159 WB Contributing  
 165 WB Non-Contributing  
 160 WB Non-Contributing  
 166 WB Contributing  
 167 WB Contributing  
 174 WB Contributing  
 177 WB Non-Contributing  
 182-196 WB Non-Contributing  
 185 WB Contributing  
 197 WB Contributing  
 206-226 WB Non-Contributing

207-217 WB Non-Contributing  
 232 WB Non-Contributing  
 239 WB Old Building (Demolished)  
 252 WB Non-Contributing (Demolished\*)  
 256 WB Non-Contributing (Demolished\*)  
 259 WB Non-Contributing  
 260 WB Non-Contributing (sales pavilion)  
 268 WB Contributing  
 275 WB Non-Contributing  
 281 WB Non-Contributing  
 325 WB Non-Contributing



# 1 - North Kipling Avenue



The illustrations below are a mapping of each heritage resource. The information within the boxes, related to each resource, can be found in the Building Inventory Sheets in the Appendix.

**8238 Kipling Avenue** Listed in VHI  
 + 2 Storey  
 + Edwardian, Circa 1810  
 + Red Brick  
 + Extended Roof element  
 + Entrance Portico  
 + Extended Architrave  
 + Small Single Dormer above

**8258 Kipling Avenue** Listed in LSHS  
 + 2 Storey  
 + Gothic Revival, Circa 1880  
 + Dichromatic Brick  
 + Bay Window  
 + Decorative Arches  
 + Verandah removed  
 + Later Garage Addition

**8265 Kipling Avenue** Listed in VHI  
 + 2 Storey  
 + Dated 1915  
 + Edwardian

**8248 Kipling Avenue**  
 + 2 Storey  
 + Queen Anne, Circa 1890  
 + Red Brick

**8228 Kipling Avenue** Listed in LSHS  
 + 2.5 Storey  
 + Queen Anne, Circa 1890  
 + Red Brick  
 + Wrapping Verandah  
 + Shingled Gable

**8204 Kipling Avenue** Listed in LSHS  
 + 2 Storey  
 + Gothic Revival, 1880  
 + Dichromatic Brick  
 + Decorative Brickwork  
 + Decorative Arches  
 + Bay Window  
 + Wrapping Verandah  
 + Decorative Ironwork

**8191 Kipling Avenue** Listed in LSHS  
 + 2 Storey  
 + Gothic Revival, Circa 1881  
 + Dichromatic Brick  
 + Decorative Brickwork  
 + Decorative Arches  
 + Decorative Verandah, Gingerbread  
 + Original Sash Windows  
 + Later addition to rear

**8177 Kipling Avenue** Listed in LSHS  
 + Designated,  
 The McGillivray-Shore House  
 + 1.5 Storey  
 + Gothic Revival Cottage, 1884  
 + Dichromatic Brick  
 + Central Gable  
 + Bay Window  
 + Decorative Brickwork and Arches  
 + Decorative Verandah, Gingerbread

**8171 Kipling Avenue**  
 + Designated  
 + Demolished

**8161 Kipling Avenue** Listed in LSHS  
 + Designated,  
 Thomas Wright House  
 + Note #'s 8109, 8177  
 + 1.5 Storey  
 + Gothic Revival Cottage, 1881  
 + Dichromatic Brick  
 + Central Gable  
 + Decorative Brickwork + Arches  
 + Decorative Verandah, Gingerbread  
 + Later addition to rear



# BUILDING INVENTORY MAPS



8255 Kipling Avenue Listed in VHI  
 Grey and Edwardian

8255 Kipling Avenue Listed in VHI  
 + 1.5 Storey  
 + Gothic Revival, Circa 1870  
 + Whitewashed brick  
 + Central Gable  
 + Decorative Vergeboard  
 + Edwardian alterations at grade



8243 Kipling Avenue Listed in LSHS  
 + 2.5 Storey  
 + Edwardian, Circa 1910  
 + Red Brick  
 + Entrance Portico and Verandah  
 + Shingled Gable



8237 Kipling Avenue Listed in LSHS  
 + 2 Storey  
 + Edwardian, Circa 1910  
 + Brown Brick  
 + Entrance Portico  
 + Truncated Hip Roof  
 + Terra Cotta Tile



8233 Kipling Avenue  
 + 1.5 Storey  
 + Victory Housing, Circa 1950  
 + Red Brick  
 + Single Central Dormer



8227 Kipling Avenue  
 + 1.5 Storey  
 + Victory Housing, Circa 1950  
 + Buff Brick  
 + Single Central Dormer  
 + Later Garage Addition



Memorial Cemetery  
 + Includes pioneer headstones  
 + Restored 1972  
 + Requires restoration



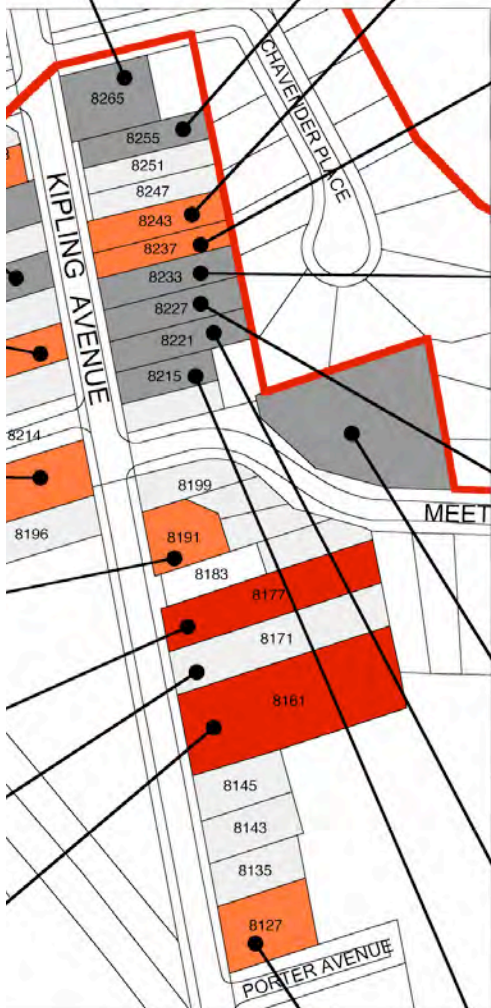
8221 Kipling Avenue  
 + 1.5 Storey  
 + Victory Housing, Circa 1950  
 + Brown Brick  
 + Single Central Dormer  
 + Later Garage Addition



8215 Kipling Avenue  
 + 1.5 Storey  
 + Victory Housing, Circa 1950  
 + Buff Brick  
 + Single Central Dormer



8127 Kipling Avenue Listed in LSHS  
 + Note #'s 8066, 8074  
 + 2.5 Storey, Built as Manse  
 + Queen Anne/Edwardian, 1902  
 + Romanesque detailing  
 + Stone Arches  
 + Bracketed Cornice  
 + Portico and Wrapping Verandah  
 + Shingled Gable





# 2 - Central Kipling Avenue



The illustrations below are a mapping of each heritage resource. The information within the boxes, related to each resource, can be found in the Building Inventory Sheets in the Appendix.



**8074 Kipling Avenue** Listed in LSHS  
 + Note #'s 8066, 8127  
 + 2.5 Storey  
 + Edwardian, Circa 1910  
 + Red Brick  
 + Small Porch over side door  
 + Neo Classical Portico  
 + Shingled Gable



**8090 Kipling Avenue** Listed in LSHS  
 + Woodbridge United Church  
 + 2/3 Storey  
 + Gothic Revival, 1882  
 + Red Brick  
 + Decorative Brickwork  
 + Pointed arch windows



**8071 Kipling Avenue** Listed in VHI  
 + 2 Storey  
 + Gothic Revival, Circa 1870  
 + Red Brick  
 + Central Gable  
 + Later Porch  
 + Upper Window covered



**8109 Kipling Avenue**  
 + Note #'s 8161, 817  
 + 2 Storey  
 + Gothic Revival Cott  
 + Dichromatic Brick  
 + Decorative Arches  
 + Central Gable, Late  
 + Later Addition 3 stc



**8066 Kipling Avenue** Listed in VHI  
 + Note #'s 8074, 8127  
 + 2.5 Storey  
 + Edwardian  
 + 1900-1925  
 + Grey Stucco  
 + C20th Addition of enclosed porch  
 + C20th 3 Storey Addition at rear

**8018 & 8026 Kipling Avenue**  
 Listed in VHI  
 + Demolished  
 + Currently under construction



**8006 Kipling Avenue** Listed in LSHS  
 + 2 Storey  
 + Circa 1880  
 + Gothic Revival  
 + Dichromatic Brick  
 + Decorative Brickwork  
 + Decorative Arches  
 + C20th Addition over Original Porch



**8000 Kipling Avenue** Listed in VHI  
 + 1 Storey  
 + Heavily Modified  
 + Community Hall



**7994 Kipling Avenue** Listed in VHI  
 + 2 Storey  
 + Classic Vernacular  
 + Grey stucco



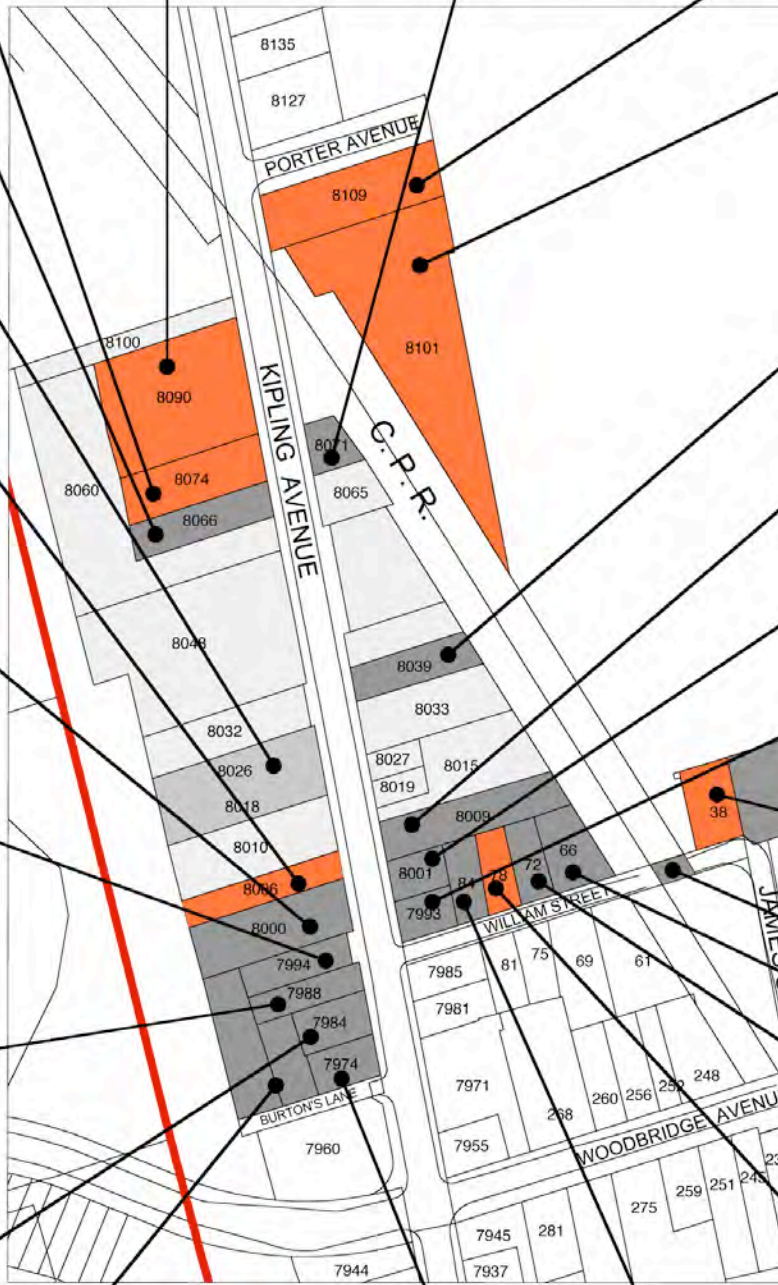
**7988 Kipling Avenue** Listed in VHI  
 + 2 Storey  
 + Classic Vernacular



**7984 Kipling Avenue** Listed in VHI  
 + 2 Storey  
 + Circa 1870  
 + Grey Weatherboard  
 + Original Porch enclosed  
 + Later entrance on Kipling w/canopy  
 + Later additions at rear



**Burton's Lane**  
 + 2 Storey  
 + Collection of Workshops/Sheds  
 + Circa 1900



**7974 Kipling Avenue**  
 + 1.5 Storey  
 + 1875-1900  
 + Late Victorian

**84 William Street**  
 + Dated 1900-1925  
 + Georgian Revival  
 + Modified  
 + New dormer, siding and w/r  
 + Porch enclosed





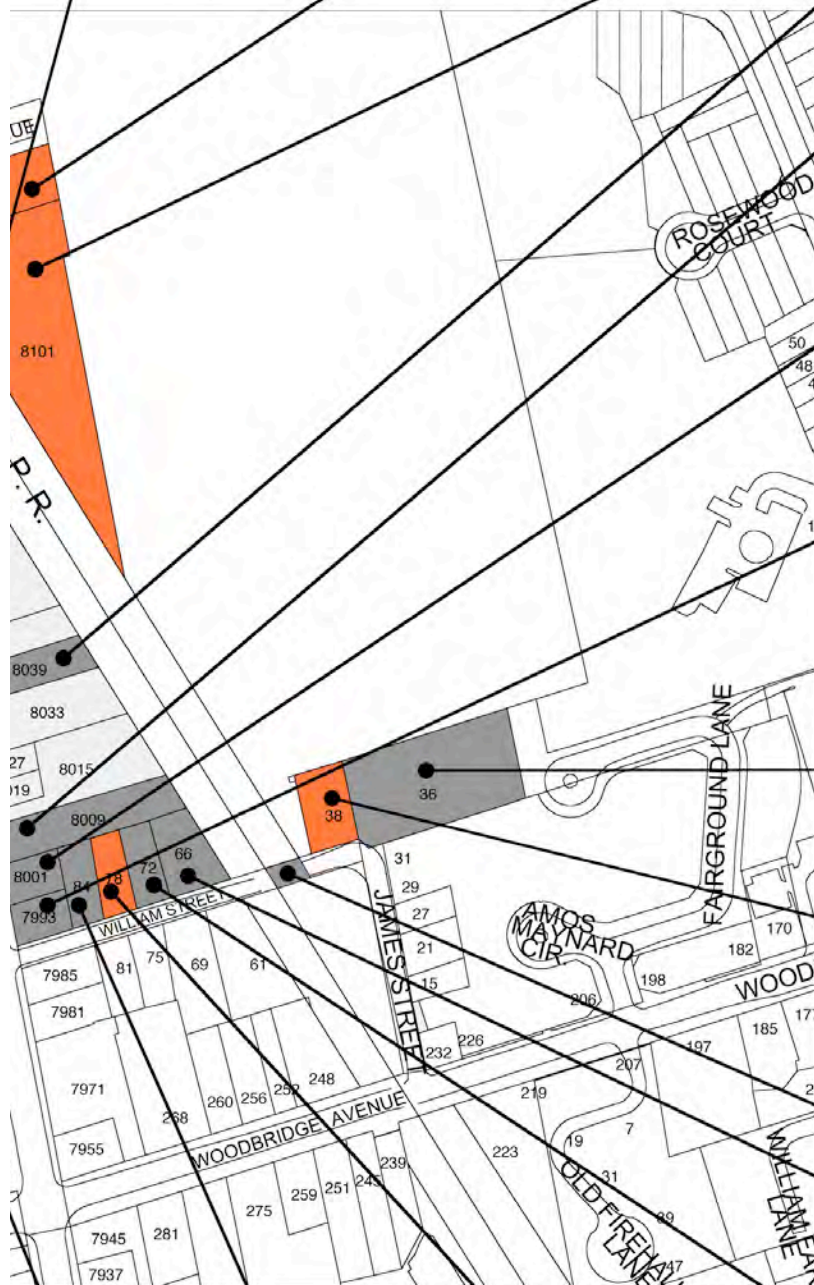


8101 Kipling Avenue Listed in VHI  
 + Revival, Circa 1870  
 + Brick  
 + Central Gable  
 + Porch  
 + Window covered

8109 Kipling Avenue Listed in LSHS  
 + Note #'s 8161, 8177  
 + 2 Storey  
 + Gothic Revival Cottage, 1880  
 + Dichromatic Brick  
 + Decorative Arches  
 + Central Gable, Later Porch  
 + Later Addition 3 storeys at rear

8101 Kipling Avenue Listed in LSHS  
 + 2 Storey  
 + Victorian, Circa 1880  
 + Brown Brick  
 + Bay Window

8039 Kipling Avenue Listed in VHI  
 + 2 Storey  
 + 1910-1920  
 + Gothic Revival  
 + Metal siding



8009 Kipling Avenue Listed in VHI  
 + 2 Storey  
 + 1900-1925  
 + Edwardian



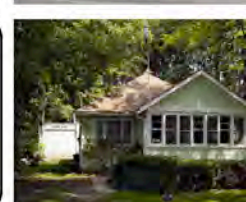
8001 Kipling Avenue Listed in VHI  
 + 2 Storey  
 + Gothic Revival  
 + 1875-1900



7993 Kipling Avenue Listed in VHI  
 + 2 Storey  
 + White weather board



36 James Street  
 + Dated 1925-1950  
 + Ontario Cottage  
 + Original form  
 + New windows  
 + Some new addition



38 James Street Listed in LSHS  
 + Dated 1880  
 + Victorian  
 + Masonry  
 + Missing porch  
 + Needs restoration  
 + Largely original

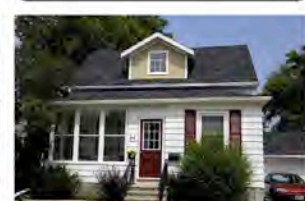
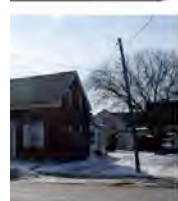


Railway  
 + Dated 1900-1925



84 William Street

84 William Street  
 + Dated 1900-1925  
 + Georgian Revival  
 + Modified  
 + New dormer, siding and windows  
 + Porch enclosed



78 William Street Listed in LSHS  
 + Dated 1870  
 + Gothic Revival Style  
 + L-plan, board and batten facade  
 + Verandah detail  
 + Remainder clapboard  
 + Need repair/restoration  
 + Original form, mostly original materials



72 William Street Listed in VHI  
 + Dated circa 1800  
 + Original form  
 + Missing porch  
 + Window replaced



66 William Street Listed in VHI  
 + 1875-1900  
 + Gothic revival  
 + Original Form  
 + New cladding, window, porch and dormer





# 3 - Kipling / Woodbridge Avenue Intersection

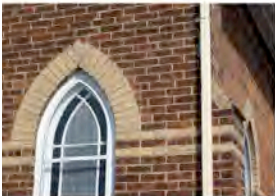


The illustrations below are a mapping of each heritage resource. The information within the boxes, related to each resource, can be found in the Building Inventory Sheets in the Appendix.



**7985 Kipling Avenue** Designated  
**William Farr House**

- + Note #7981
- + 2 Storey
- + Gothic Revival, Circa 1880
- + Dichromatic Brick
- + Bay Window
- + Decorative Arches
- + Decorative Portico w/Vergeboard



**7971 Kipling Avenue** Listed in LSHS  
**Woodbridge Presbyterian Church**

- + Gothic Revival, dated 1877
- + Dichromatic Brick
- + Stained Window with Trefoil
- + Bell Tower with Iron Cresting
- + Later 20th Century Addition at rear



**7955 Kipling Avenue**

- + 2 Storey
- + Late west facade
- + Needs Research



**7938 Kipling Avenue** Listed in VHI

- + 2 Storey



**7934 Kipling Avenue** Listed in LSHS

- + 2 Storey
- + Late Victorian, circa 1900
- + Red Brick
- + Wrapping Verandah
- + Oval Window



**7924 Kipling Avenue** Listed in VHI

- + Italianate
- + Late 1800's
- + Stucco



**7912 Kipling Avenue** Listed in VHI

- + Dated circa 1890
- + 2 Storey
- + Ontario Cottage Style



**7909 Kipling Avenue** Listed in VHI

- + 2 Storey
- + 1925-1950
- + Edwardian
- + Red brick
- + Front Porch
- + L Shaped Plan
- + Bay Window
- + Shutters on upper windows



**7895 Kipling Avenue**

- + 1.5 Storey
- + 1900-1925
- + Bungalow Style
- + Buff brick
- + Double Dormer at front and rear
- + Large Verandah

**24 Abell Avenue** Listed in VHI

- + Dated 1900-1925
- + Edwardian
- + Mostly original
- + New window, trim, brick





**7981 Kipling Avenue** *Listed in LSHS*

- + Note #7985
- + 2 Storey
- + Gothic Revival, Circa 1880
- + Dichromatic Brick
- + Bay Window
- + Later addition and balcony
- + Decorative Arches

**69 William Street** *Listed in LSHS*

- + Dated 1860
- + Georgian
- + Verandah detail
- + Brick masonry
- + Original form
- + Sills, lintels painted, railings replaced

**27 James Street** *Listed in VHI*

- + Gothic Revival
- + Dated 1875-1900
- + Spray Stucco
- + Modified
- + New siding, garage, porch
- + Addition

**21 James Street**

- + Queen Anne
- + Dated 1900-1925
- + Modified
- + New siding, window
- + Enclosed porch
- + Original form

**7945 Kipling Avenue** *Listed in VHI*

- + 1900-1925
- + Arts & Crafts Tudor
- + 2 Storey
- + Wood shingle roof

**7929 Kipling Avenue** *Listed in VHI*

- + 2 Storey
- + Edwardian
- + Dated circa 1900
- + Red brick

**7925 and 7927 Kipling Avenue** *Listed in VHI*

- + 2 Storey
- + Worker's Cottages, circa 1880
- + Red Brick, Whitewashed
- + Semi-detached
- + Original Windows
- + Edwardian Porches

**7913 Kipling Avenue** *Listed in LSHS*

- + Note #7833
- + 2 Storey
- + Gothic Revival, circa 1880
- + Vertical Grey Board and Batten
- + Bay Window
- + Decorative Verandah
- + Gingerbread trim
- + Original Windows

**Abell Avenue** *Listed in VHI*

- + 1900-1925
- + Plan original
- + Window, trim, brick

**28 Abell Avenue**

- + Dated 1900-1925
- + Edwardian
- + New window, trim, porch
- + Original form

**32 Abell Avenue** *Listed in VHI*

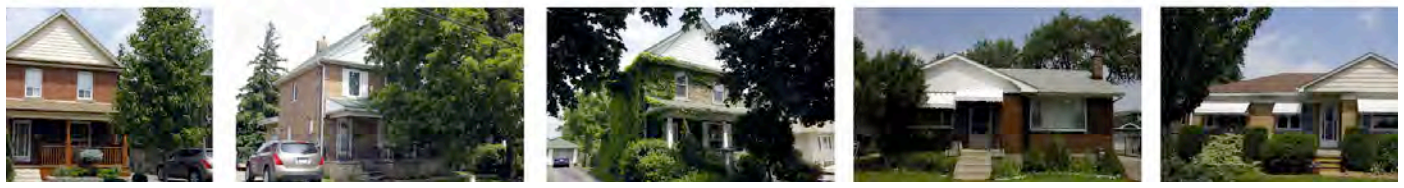
- + Dated 1900-1925
- + Edwardian
- + Early patterned brick
- + Original form
- + New trim, window

**44 Abell Avenue**

- + Dated 1925-1950
- + Ranch Style
- + Original form and materials

**54 Abell Avenue**

- + Dated 1950-1975
- + Ranch modest style
- + Original form
- + New trim





# 4 - South Kipling Avenue



The illustrations below are a mapping of each heritage resource. The information within the boxes, related to each resource, can be found in the Building Inventory Sheets in the Appendix.

7872 Kipling Avenue Listed in VHI

- + 1925-1950
- + 2.5 Storey
- + Edwardian

7880 Kipling Avenue Listed in VHI

- + 1925-1950
- + 2 Storey
- + Edwardian

7883 Kipling Avenue

- + 1925-1950
- + 2 Storey
- + Colonial Revival
- + Red brick
- + Decorative Portico and Columns
- + Shuttered Upper Windows

23 Abell Avenue

- + Dated 1900-15
- + Edwardian
- + Heavily modified
- + New cladding
- + Garage

7866 Kipling Avenue Listed in VHI

- + 1925-1950
- + 2.5 Storey
- + Edwardian

7866 Kipling Avenue Listed in VHI

- + 1925-1950
- + 2.5 Storey
- + Edwardian

7856 Kipling Avenue Listed in LSHS

- + 2.5 Storey
- + Victorian, circa 1890
- + Red Brick
- + Decorative Vergeboard
- + Decorative Arches
- + Brackets

7856 Kipling Avenue Listed in LSHS

- + 2.5 Storey
- + Victorian, circa 1890
- + Red Brick
- + Decorative Vergeboard
- + Decorative Arches
- + Brackets

7845 Kipling Avenue

- + 1 Storey
- + Contempo Style, circa 1960
- + Vertical Grey Weatherboards
- + Low Pitched Roof
- + Large Picture Windows
- + Stone Chimney

7845 Kipling Avenue

- + 1 Storey
- + Contempo Style, circa 1960
- + Vertical Grey Weatherboards
- + Low Pitched Roof
- + Large Picture Windows
- + Stone Chimney

7848 Kipling Avenue Listed in VHI

- + 2 Storey
- + 1940's Cottage Style

7848 Kipling Avenue Listed in VHI

- + 2 Storey
- + 1940's Cottage Style

7844 Kipling Avenue Listed in VHI

- + 1925-1950
- + 2 Storey

7844 Kipling Avenue Listed in VHI

- + 1925-1950
- + 2 Storey

7826 Kipling Avenue

- + 2 Storey

7826 Kipling Avenue

- + 2 Storey

7814 Kipling Avenue Listed in VHI

- + 2 Storey
- + Frame
- + Verandah

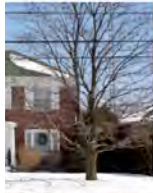
7810 Kipling Avenue Listed in VHI

- + Edwardian
- + 2.5 Storey
- + Red Brick
- + Verandah

7790 Kipling Avenue Listed in VHI

- + 2.5 Storey
- + Heavily modified
- + Trace of original form





ue  
l  
ico and Columns  
r Windows

23 Abell Avenue Listed in VHI  
+ Dated 1900-1925  
+ Edwardian  
+ Heavily modified  
+ New cladding and windows  
+ Garage

41 Abell Avenue  
+ Dated 1925-1950  
+ Victory cottage  
+ New window  
+ Original form

45 Abell Avenue  
+ Dated 1925-1950/1950-1975  
+ Edwardian  
+ Window replaced  
+ Original form



51 Abell Avenue  
+ Dated 1925-1950  
+ Victory cottage  
+ Original form and materials



71 Cheltenham Avenue  
+ Victory cottage  
+ Unmodified



54 Cheltenham Avenue  
+ Dated 1925-1950/1950-1975  
+ Victory cottage  
+ Lightly modified  
+ New window, porch



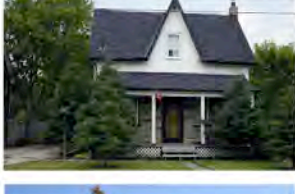
7833 Kipling Avenue Listed in LSHS  
+ Note #7913  
+ 2 Storey  
+ Gothic Revival, circa 1880  
+ Contemporary Aluminum Siding  
+ Verandah  
+ Gingerbread trim



38 Burwick Avenue  
+ Dated 1925-1950  
+ Victory cottage



20 Burwick Avenue  
+ Dated 1875-1900  
+ Ontario cottage  
+ Original form with barn  
+ Modified  
+ New siding, window



7790 Kipling Avenue Listed in VHI  
+ 2.5 Storey  
+ Heavily modified  
+ Trace of original form

7806 Kipling Avenue Listed in VHI  
+ Edwardian  
+ 2.5 Storey  
+ Red Brick  
+ Shingled Gable  
+ Verandah



7827 Kipling Avenue Listed in VHI  
+ 2.5 Storey  
+ 1900-1925  
+ Recent Alteration



7817 Kipling Avenue Listed in VHI  
+ 2.5 Storey  
+ Edwardian, Circa 1910  
+ Red brick  
+ Shingled Gable  
+ Verandah  
+ Stable to rear





# 5a - Woodbridge Avenue



The illustrations below are a mapping of each heritage resource. The information within the boxes, related to each resource, can be found in the Building Inventory Sheets in the Appendix.



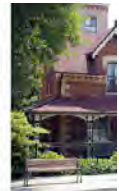
160 & 166 Woodbridge Avenue  
Listed in LSHS  
**Inkerman Hotel**  
+ Dated 1860  
+ Georgian  
+ Brick  
+ Been modified  
+ New windows  
+ Needs repair  
+ Crowded by surrounding development



154 Woodbridge Avenue  
Listed in VHI **Demolished**  
+ New residential building  
+ Commercial on ground



150 Woodbridge Avenue  
Listed in LSHS  
**Woodbridge Public Library**  
+ Dated 1922  
+ Neo-classical  
+ Historic Carnegie renovated  
+ Brick  
+ Substantially altered in 1975-2000



137 Woodbridge Avenue  
Listed in LSHS  
**Wallace House**  
+ Dated 1873  
+ Victorian Gc  
+ L-Plan, patterned vergeboard  
+ Brick restore



174 Woodbridge Avenue  
Listed in VHI  
+ Dated 1950-1975  
+ Single storey



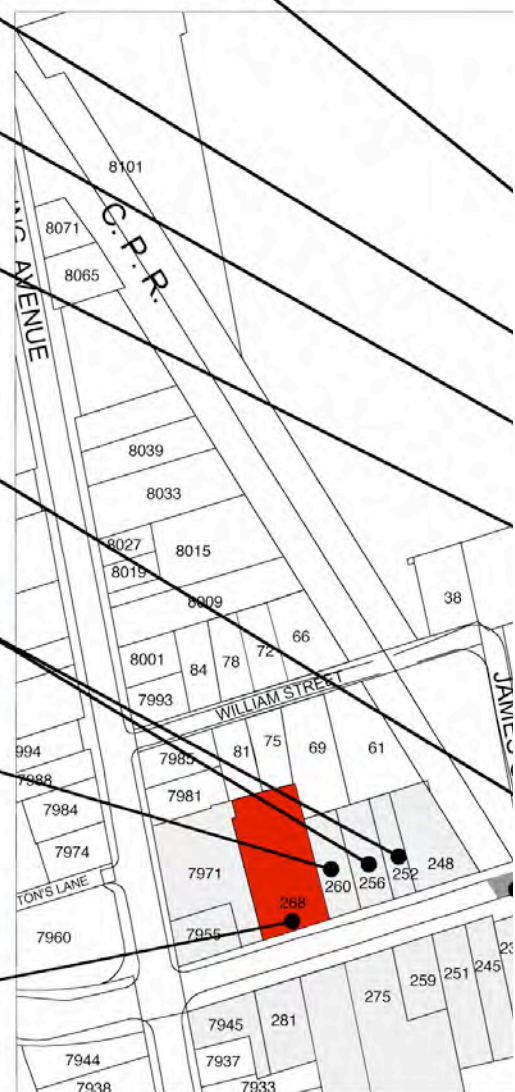
232 Woodbridge Avenue  
Listed in VHI  
+ Dated 1975-2000  
+ Small commercial building



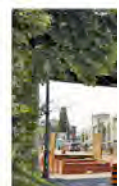
256 Woodbridge Avenue **Demolished**  
252 Woodbridge Avenue **Demolished**  
+ Listed in VHI  
  
260 Woodbridge Avenue **Demolished**  
+ Temporary structure  
+ Sales pavillion



268 Woodbridge Avenue **Designated**  
**Donald Grant House**  
+ Dated 1882  
+ Late victorian, gothic revival  
+ L-Plan, decorative vergeboard  
+ Largely original, New windows  
+ Semi-restored, Rear addition  
+ Designated under Part IV of the Ontario Heritage Act, By-Law 177-80



Railway Bridge  
+ Dated 1900  
+ Elevated tra  
+ Needs rest







**150 Woodbridge Avenue**  
 Listed in LSHS  
 Woodbridge Public Library

- + Dated 1922
- + Neo-classical
- + Historic Carnegie renovated
- + Brick
- + Substantially altered in 1975-2000

**137 Woodbridge Avenue**  
 Listed in LSHS  
 Wallace House

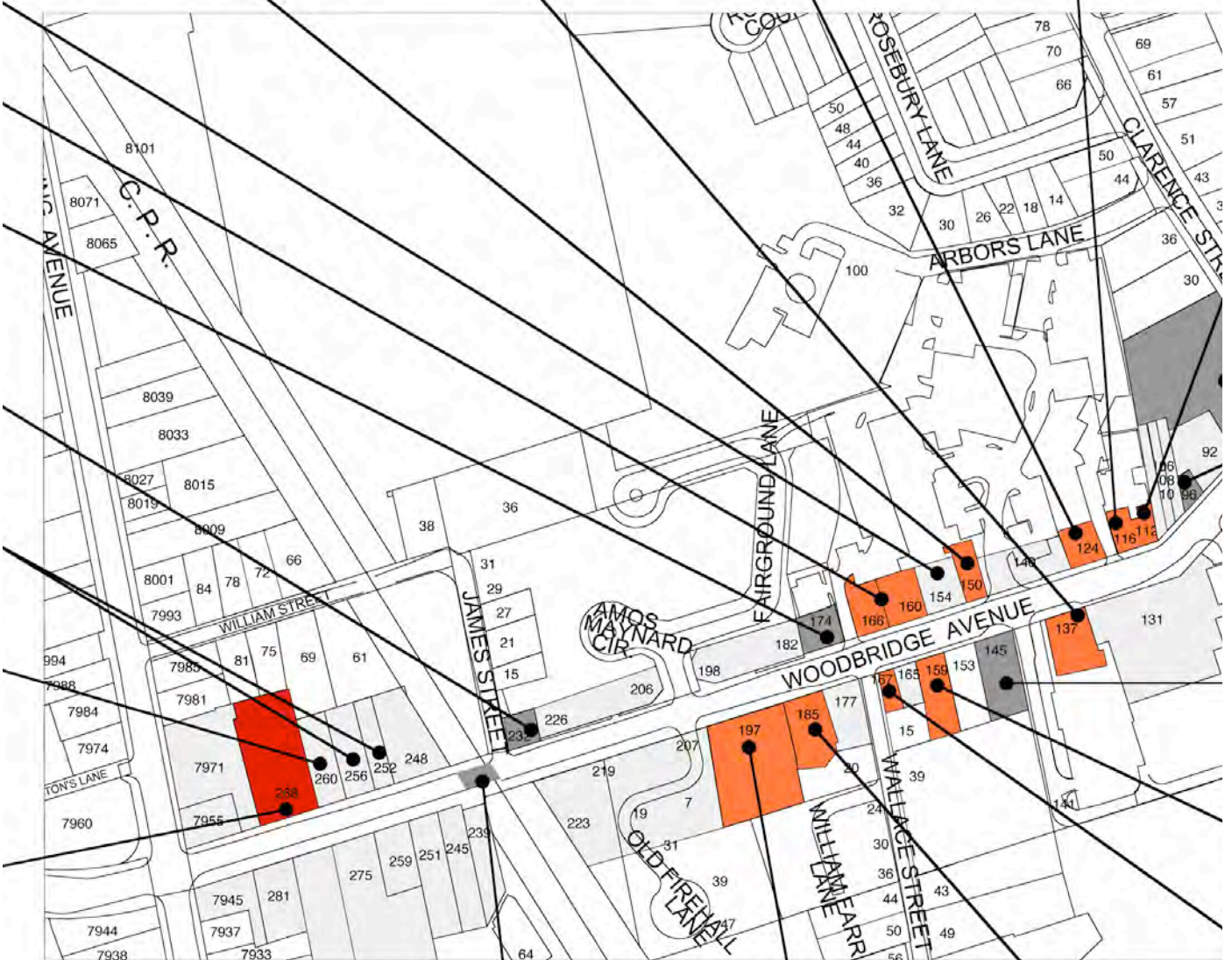
- + Dated 1873
- + Victorian Gothic
- + L-Plan, pattern brick, decorative vergeboard
- + Brick restored

**124 Woodbridge Avenue**  
 Listed in LSHS  
 Gilmour Hotel, Commercial House:

- + Dated 1878
- + Georgian
- + Been modified
- + New front porch
- + Lower wall new windows
- + Verandah and windows altered for commercial use

**116 Woodbridge Avenue**  
 Listed in LSHS

- + Dated 1880
- + Ontario vernacular
- + Clapboard, verandah detail
- + Been modified
- + New windows on ground floor
- + Original Porch
- + Commercial use



**Railway Bridge**

- + Dated 1900-1925
- + Elevated train trestle
- + Needs restoration and painting

**197 Woodbridge Avenue**  
 Listed in LSHS  
 Dr. Peter Mclean House and Office

- + Dated 1893
- + Modified Queen-Anne
- + Unrestored, largely un-altered
- + Roof has been raised
- + Brick with Barn
- + Altered early 20th century, picturesque with late 19th century features

**185 Woodbridge Avenue**  
 Listed in LSHS  
 Thomas Frazer Wallace House

- + Dated 1875
- + Gothic Revival
- + Board and batten
- + Restored
- + Wood frame victorian
- + In good condition





# 5b - Woodbridge Avenue



The illustrations below are a mapping of each heritage resource. The information within the boxes, related to each resource, can be found in the Building Inventory Sheets in the Appendix.



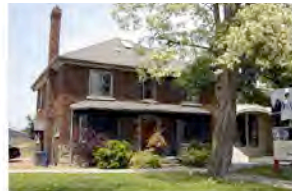
**116 Woodbridge Avenue**  
Listed in LSHS

- + Dated 1880
- + Ontario vernacular
- + Clapboard, verandah detail
- + Been modified
- + New windows on ground floor
- + Original Porch
- + Commercial use



**112 Woodbridge Avenue** Listed in VHI

- + Dated 1925-1950
- + Been modified
- + Shed / Garage
- + Addition to 116 Woodbridge



**86 Woodbridge Avenue** Listed in VHI

- + Dated 1910-1940
- + Been modified
- + Brick 1920's cottage
- + Altered, new addition
- + Modified windows



**96 Woodbridge Avenue** Listed in VHI

- + Cottage
- + Dated 1925-1950
- + Modified new siding window



**97 Woodbridge Avenue**  
Possible heritage contributing property

- + Dated 1920-1950
- + Art Moderne
- + Been modified
- + Residential above



**145 Woodbridge Avenue**  
Listed in VHI

- + Dated 1950-1975
- + Single storey commercial



The park



**185 Woodbridge Avenue**  
Listed in LSHS  
Thomas Frazer Wallace House

- + Dated 1875
- + Gothic Revival
- + Board and batten
- + Restored
- + Wood frame victorian
- + In good condition



**167 Woodbridge Avenue**  
Listed in LSHS  
Staten House, Dominion Exchange

- + Dated 1867
- + Classical Revival
- + Been modified
- + New windows
- + Good condition
- + Largely original
- + Opening altered



**159 Woodbridge Avenue**  
Listed in LSHS

- + Dated 1900-1925
- + Edwardian
- + Brick Masonry
- + Been modified
- + New windows
- + Store front altered
- + Front door clapboard siding





# 6 - Islington Avenue



The illustrations below are a mapping of each heritage resource. The information within the boxes, related to each resource, can be found in the Building Inventory Sheets in the Appendix.

**8142 Islington Avenue**

- + Dated 1950-1975
- + Church
- + Modern Style

**8086 Islington Avenue**

- + Dated 1900-1925 or 1925-1950
- + Georgian revival
- + New windows and roofing
- + Store front
- + Small addition
- + Heavily modified, needs research

**8045 Islington Avenue Listed in SHS**

- + Dated 1921
- + Christ Church Anglican
- + Gothic Revival Style
- + Brick
- + Addition 1950- 1975

**8025 Islington Avenue Listed in SHS**

- + Dated 1884
- + Church rectory
- + Brick; L-plan
- + Victorian
- + Mostly original form
- + Modified with new front porch

**7973 Islington Avenue Listed in VHI**

- + Dated 1925-1950
- + Country Cottage
- + Mostly original
- + Good condition
- + New windows

**7961 Islington Avenue Listed in VHI**

- + Dated 1933
- + Edwardian
- + Original form
- + Good condition
- + Slightly modified with new windows



# 7 - Clarence Street

The illustrations below are a mapping of each heritage resource. The information within the boxes, related to each resource, can be found in the Building Inventory Sheets in the Appendix.



249 Clarence Street **Listed in LSHS**  
**Nathaniel Clark Wallace House;**  
**Hiawatha**

- + Dated 1870
- + Gothic Revival Style
- + Brick, L-plan
- + Being modified, under construction
- + Modest condition



250 Clarence Street **Listed in LSHS**

- + Dated 1850/1933
- + Georgian Style
- + Been modified
- + Log cabin with additions
- + Roof has been raised
- + Side addition was added
- + Two 19th century log houses were moved to present site in 1933



187 Clarence Street **Listed in LSHS**

- + Dated 1870
- + Georgian
- + 1930's chimney
- + Woodframe
- + Aluminum drop siding, wraparound verandah



175 Clarence Street **Listed in LSHS**  
**Thomas Nye House**

- + Dated 1875
- + Classic Ontario Cottage Style
- + Brick
- + Mostly original



169 Clarence Street **Listed in VHI**

- + Dated 1925-1950
- + 1940's Cottage Style
- + Largely original
- + Brick



159 Clarence Street **Listed in VHI**

- + Dated 1850- 1875
- + Ontario Cottage Style
- + Heavily modified with modern cladding
- + Front various additions



102 Clarence Street

- + Dated 1925- 1950
- + Late Edwardian
- + Modified with new windows & siding
- + Original form
- + With barn



70 Clarence Street

- + Dated 1925- 1950
- + 1930's cottage



50 Clarence Street

- + Dated 1925- 1950
- + 1940's cottage



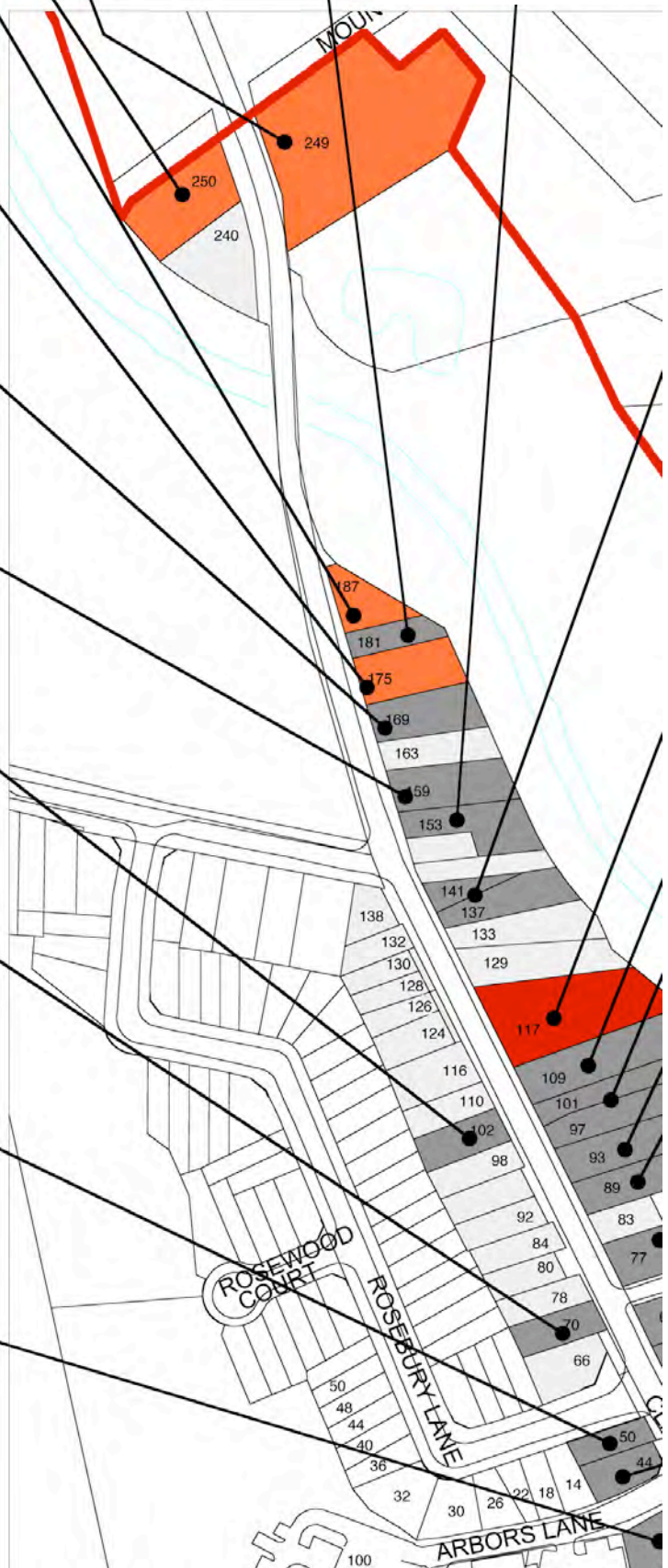
36 Clarence Street

- + Dated 1925- 1950
- + Art Moderne Cottage Style
- + Stucco on masonry

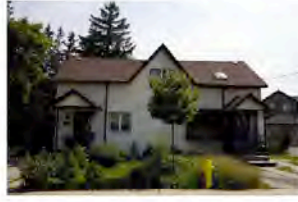


181 Clarence Street  
**Listed in VHI**

- + Dated 1925- 1950
- + 1940's Cottage
- + Heavily modified with addition





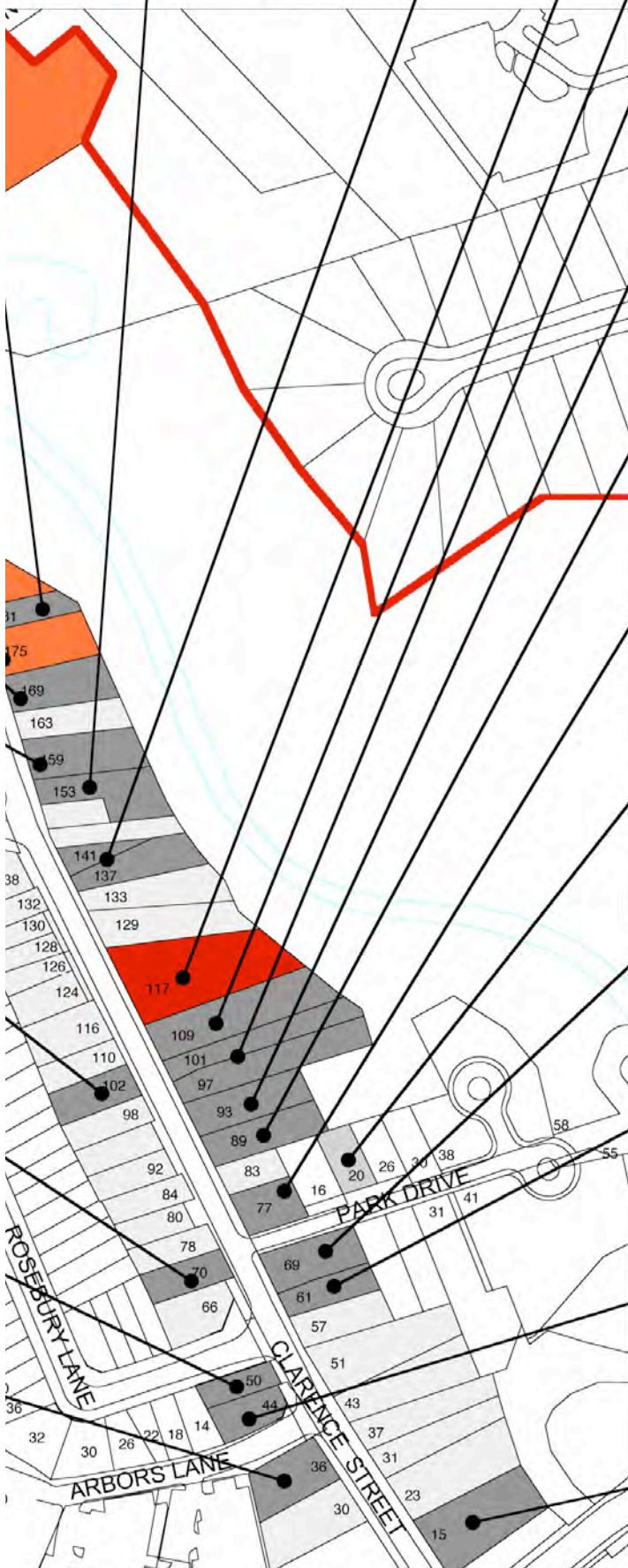


**153 Clarence Street**

- + Dated 1925- 1950
- + Ontario Cottage Style
- + Woodframe
- + Modified with new cladding

**141 & 137 Clarence Street**  
Listed in VHI

- + Dated 1875-1900
- + Ontario Cottage Style
- + Woodframe
- + Modified with new siding, windows
- + New porch and some additions



**117 Clarence Street** Designated  
**John Abell House**

- + Dated 1859
- + Georgian Style (classical details)
- + Three bay with side addition
- + Clapboard siding, wraparound verandah
- + Largely original
- + Garage addition
- + New chimney



**109 Clarence Street**

- + Dated 1925-1950
- + Cape Cod Cottage Style
- + Modified with new siding, windows



**97&101 Clarence Street** Listed in VHI

- + c. 1920
- + Heavily modified
- + New cladding
- + Some addition



**93 Clarence Street** Listed in VHI

- + c. 1900
- + Edwardian Style
- + Modified with new cladding, windows
- + Original form



**89 Clarence Street** Listed in VHI

- + Dated 1900- 1925
- + Vernacular Cottage Style
- + Stucco on masonry
- + Modified with new windows



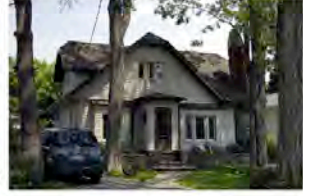
**77 Clarence**

- + 1900-1925
- + Heavily modified, new additions, and some windows, poor condition



**20 Park Drive**

- + 1920's Cottage
- + Modified with new windows & siding
- + Woodframe (maybe)



**69 Clarence Street**

- + Dated 1925- 1950
- + Ontario Cottage
- + Modified with new windows, cladding
- + Original form
- + Woodframe



**61 Clarence Street**

- + Dated 1925-1950
- + Ontario Cottage
- + Modified with new windows, cladding
- + Original form
- + Woodframe



**44 Clarence Street**

- + Dated 1925-1950
- + Art Moderne Cottage
- + Heavily modified
- + New windows and other elements



**15 Clarence Street**

- + Dated 1825-1850
- + Georgian
- + Heavily modified
- + Exterior and roof changed
- + New addition shed
- + Very poor condition





# 8 - Wallace Street



The illustrations below are a mapping of each heritage resource. The information within the boxes, related to each resource, can be found in the Building Inventory Sheets in the Appendix.



44 Wallace Street Listed in VHI  
 + Dated 1900-1925  
 + Edwardian  
 + Original form  
 + Good condition  
 + Unmodified  
 + New medal roof



50 Wallace Street Listed in LSHS  
 + Dated 1910  
 + Edwardian  
 + Brick  
 + Original condition



56 Wallace Street Listed in VHI  
 + Dated 1900-1925  
 + Bungalow Style  
 + Original  
 + New cladding on dormer  
 + New rear addition  
 + Good condition



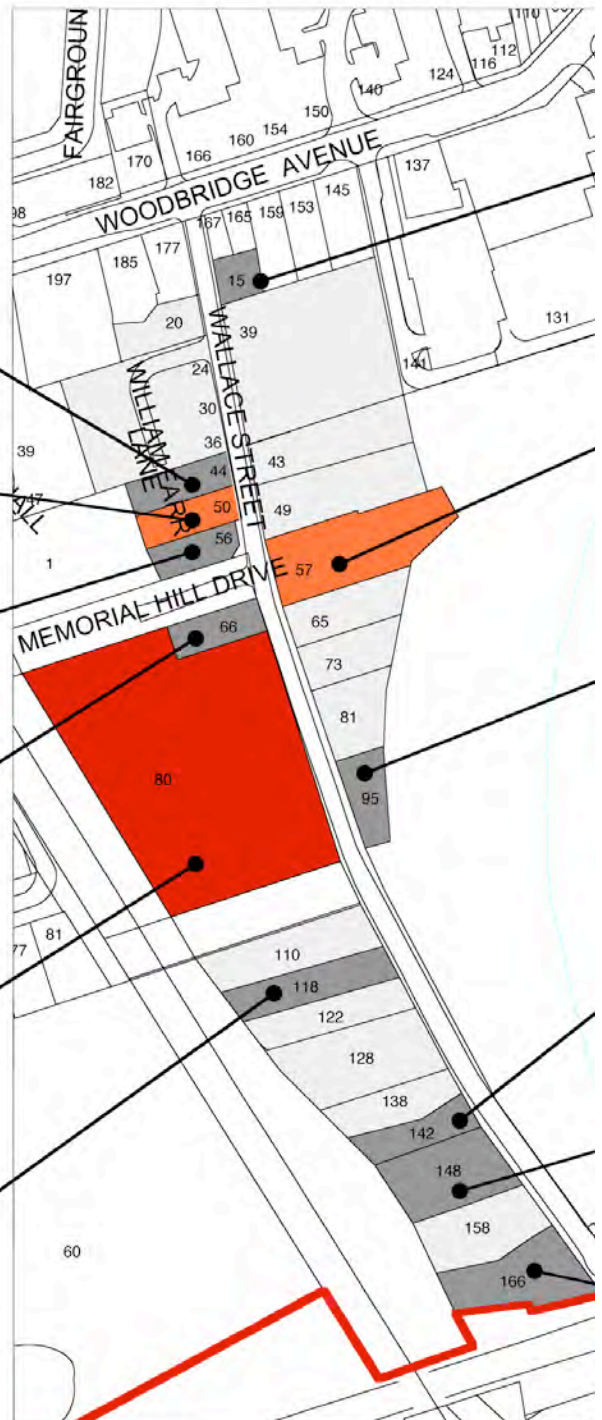
66 Wallace Street Listed in VHI  
 + Dated 1900-1925  
 + Edwardian  
 + Modified  
 + New windows, porch  
 + Aluminum trim



80 Wallace Street Designated Woodbridge Memorial Tower  
 + Dated 1924  
 + Split field stone tower  
 + Designated under Part IV of the Ontario Heritage Act. By-Law #18-96 memorial to World War I veterans



118 Wallace Street Listed in VHI  
 + Dated 1900-1925  
 + Edwardian  
 + Heavily altered  
 + New windows, cladding, roof domer  
 + Many small alterations





15 + 19 Wallace Street Listed in VHI

- + Dated 1900-1925
- + Neo Classical
- + Heavily modified
- + New Siding window
- + Modified porches
- + Original form



57 Wallace Street Listed in LSMS

- + Dated 1880
- + Ontario Cottage
- + Brick
- + Peak added later
- + Modified, New garage and windows
- + Repaired, Good Condition
- The Wallace Family



95 Wallace Street Listed in VHI

- + Dated 1875-1900
- + Georgian
- + Heavily altered, additions
- + Porch enclosed
- + New cladding, window
- + Trace of original form with accessory building



142 Wallace Street Listed in VHI

- + Dated 1875-1900
- + Gothic revival
- + Modified, New siding, window, cladding on porch



148 Wallace Street Listed in VHI

- + Dated 1875-1900
- + Gothic revival
- + Slightly modified
- + Original form
- + New siding
- + Complete with stable



166 Wallace Street

- + Dated 1875-1900
- + Dutch colonial revival
- + Poor condition
- + Largely original





