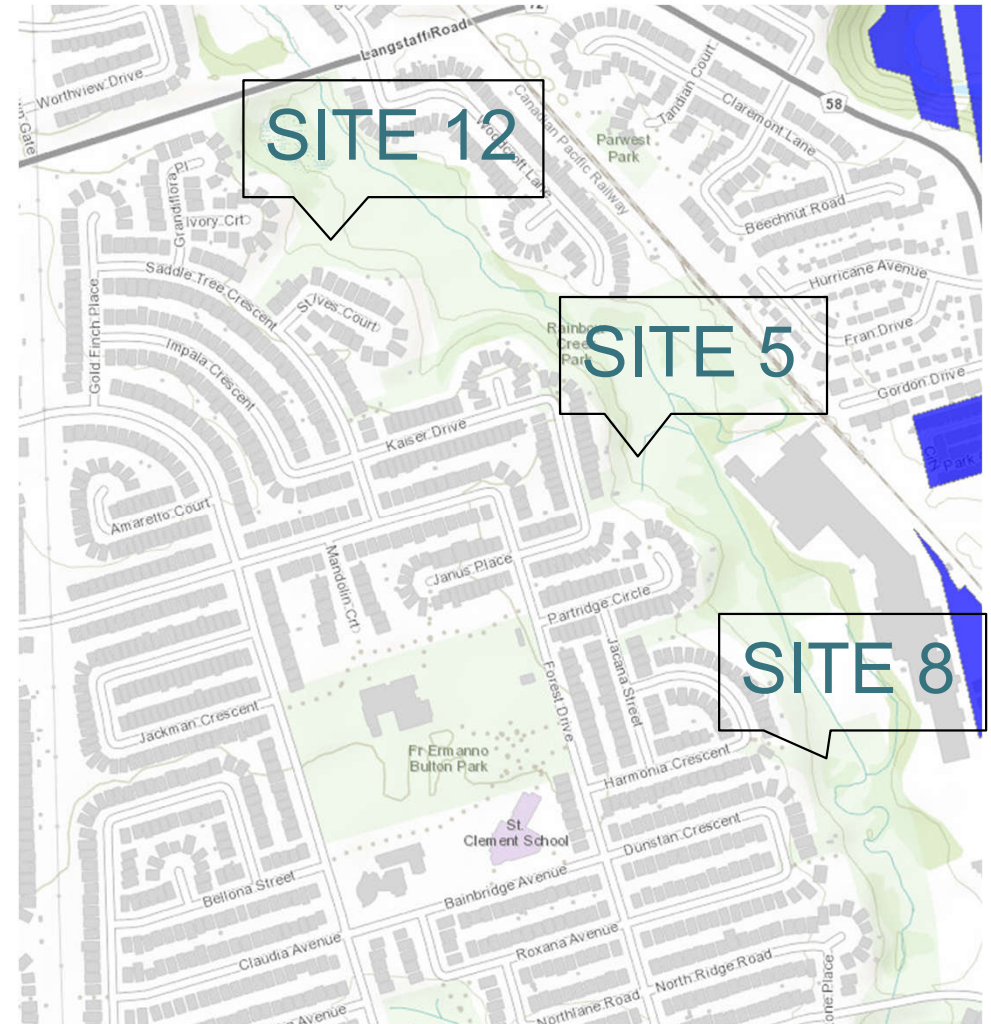




**Welcome to the Public Open House for
The City of Vaughan Pond Retrofits
Accumen Investments Pond
Harmonia Crescent Pond
Ivory Court/Saddle Tree Crescent Pond**

Project Objective

- ❖ City applied for partial funding from the federal Disaster Mitigation Adaption Fund (DMAF) in 2019
- ❖ Retrofit **Accumen Investments Pond (Site 5)** from a dry pond to wet pond.
- ❖ Retrofit **Harmonia Crescent Pond (Site 8)** from a dry pond to wetland facility
- ❖ Construct a new wetland facility at the **Saddle Tree Crescent Outfall (Site 12)**



Project Objective: Site 5

❖ Accumen Investments Pond

- 2009 SWM Retrofit Study by Aquafor identified the potential to improve water quality, erosion and flooding.

❖ Project Objective:

- Retrofit existing Flood Control Facility (Dry Pond) to provide Water Quality Benefits (Wet Pond)

❖ Benefits:

- Improved water quality through the removal of pollutants from stormwater



Existing Conditions – Site 5



Site Area

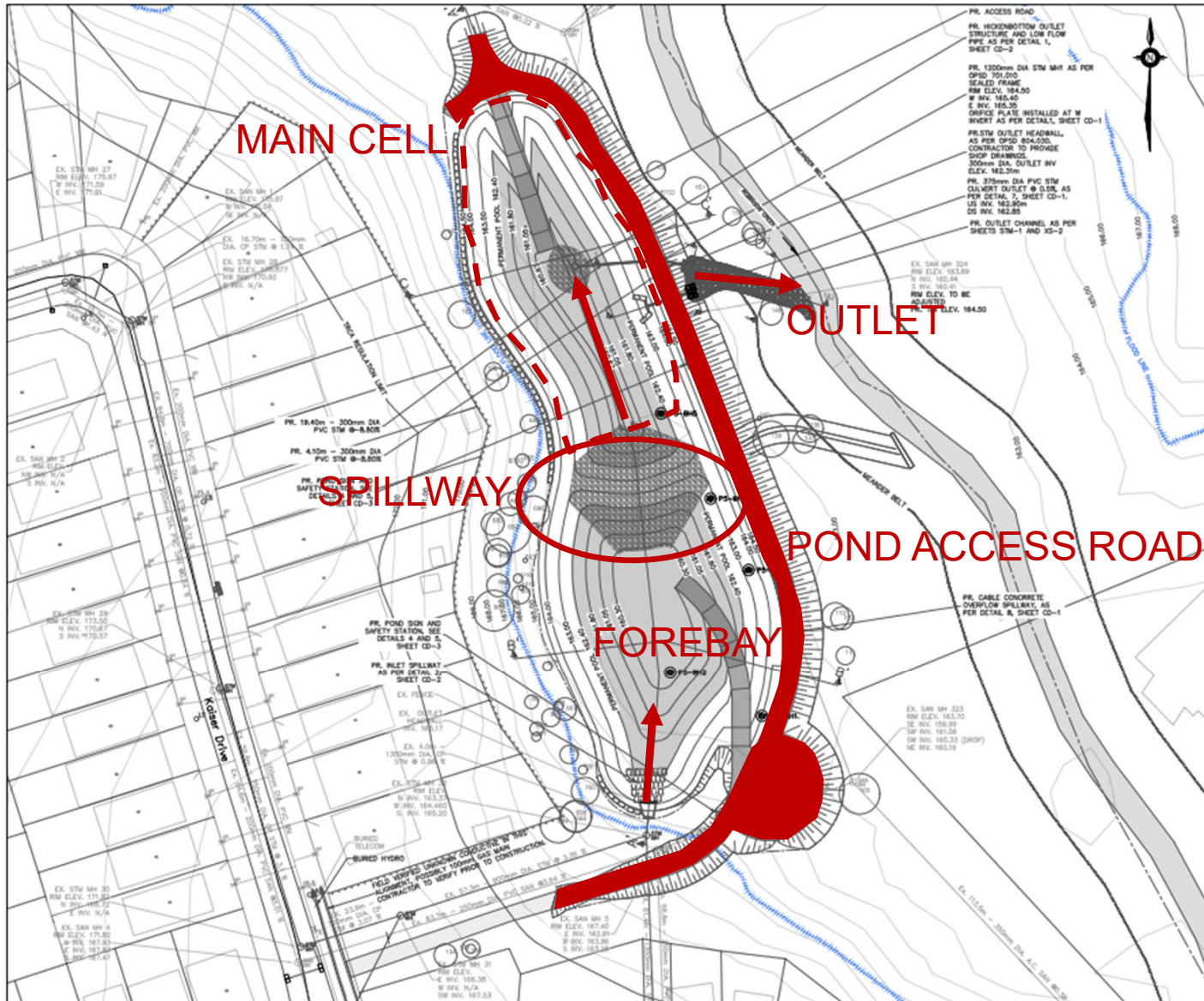
Pond Outlet

Pond Inlet

Kaiser Dr



Proposed Works – Site 5 (Wet Pond)



Project Objective: Site 8

❖ Harmonia Court Pond

- 2009 SWM Retrofit Study by Aquafor identified the potential to improve water quality, erosion and flooding.

❖ Project Objective:

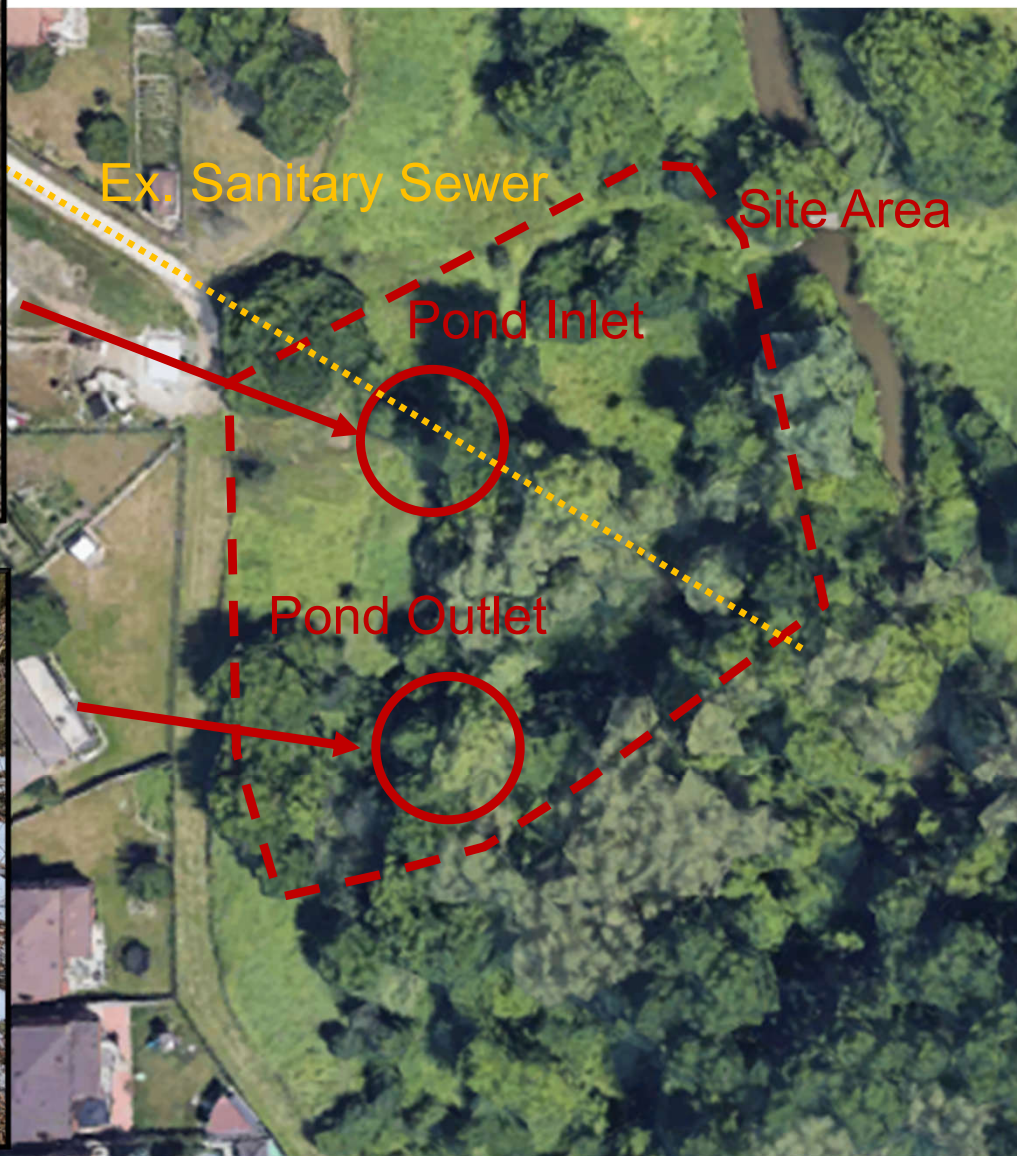
- Retrofit existing Flood Control Facility (Dry Pond) to provide Water Quality Benefits (Wetland Facility)
- Relocate Sanitary Sewer Line Outside of Pond

❖ Benefits:

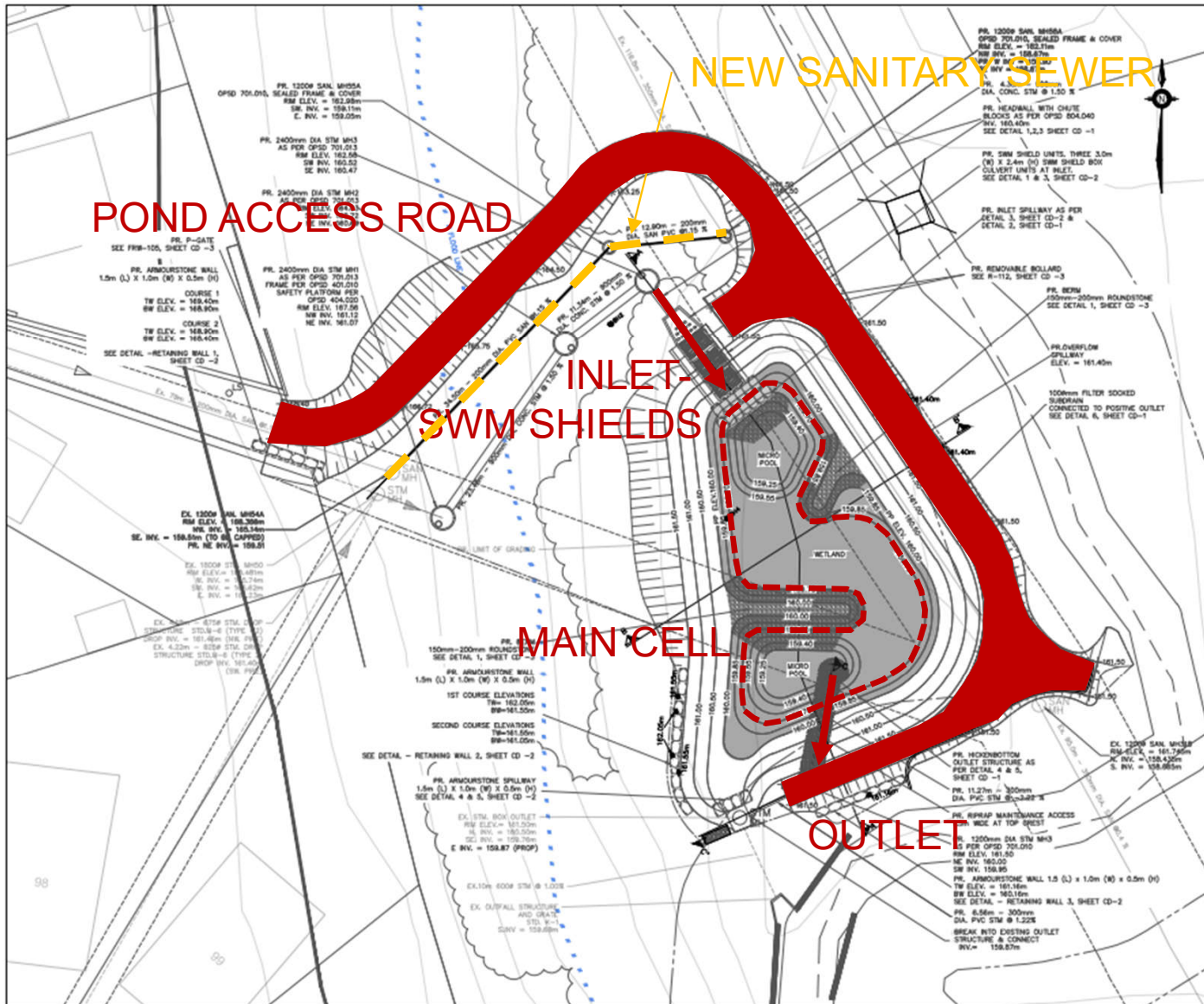
- Improved water quality through the removal of pollutants from stormwater
- Ease of Access for Future Maintenance on Sanitary Line



Existing Conditions – Site 8



Proposed Works – Site 8 (Wetland)



Project Objective: Site 12

❖ Saddle Tree Crescent Outfall

- 2009 SWM Retrofit Study by Aquafor identified the potential to improve water quality, erosion and flooding.

❖ Project Objective:

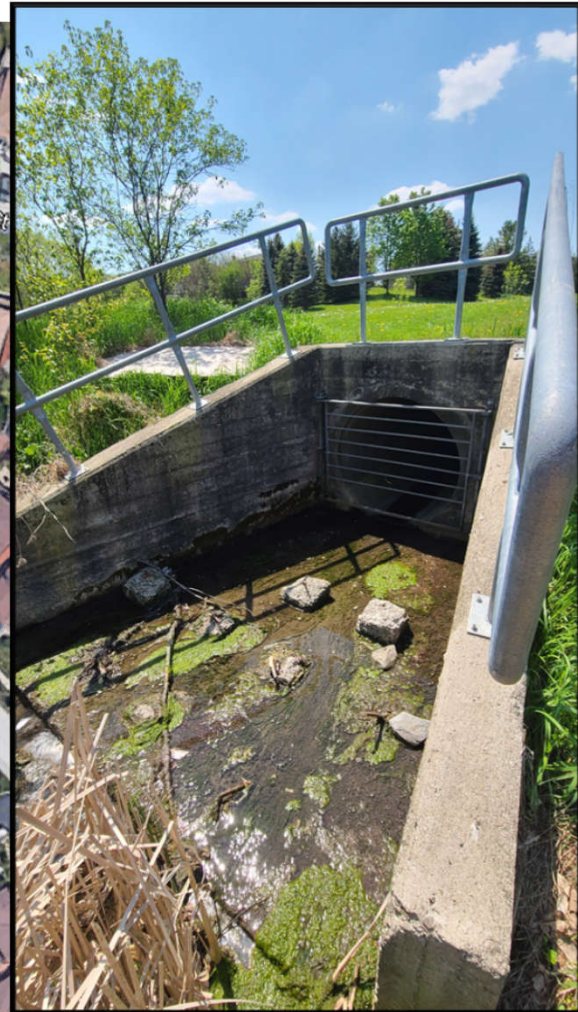
- Retrofit existing Uncontrolled Outfalls to provide Water Quality Benefits (Wetland Facility)

❖ Benefits:

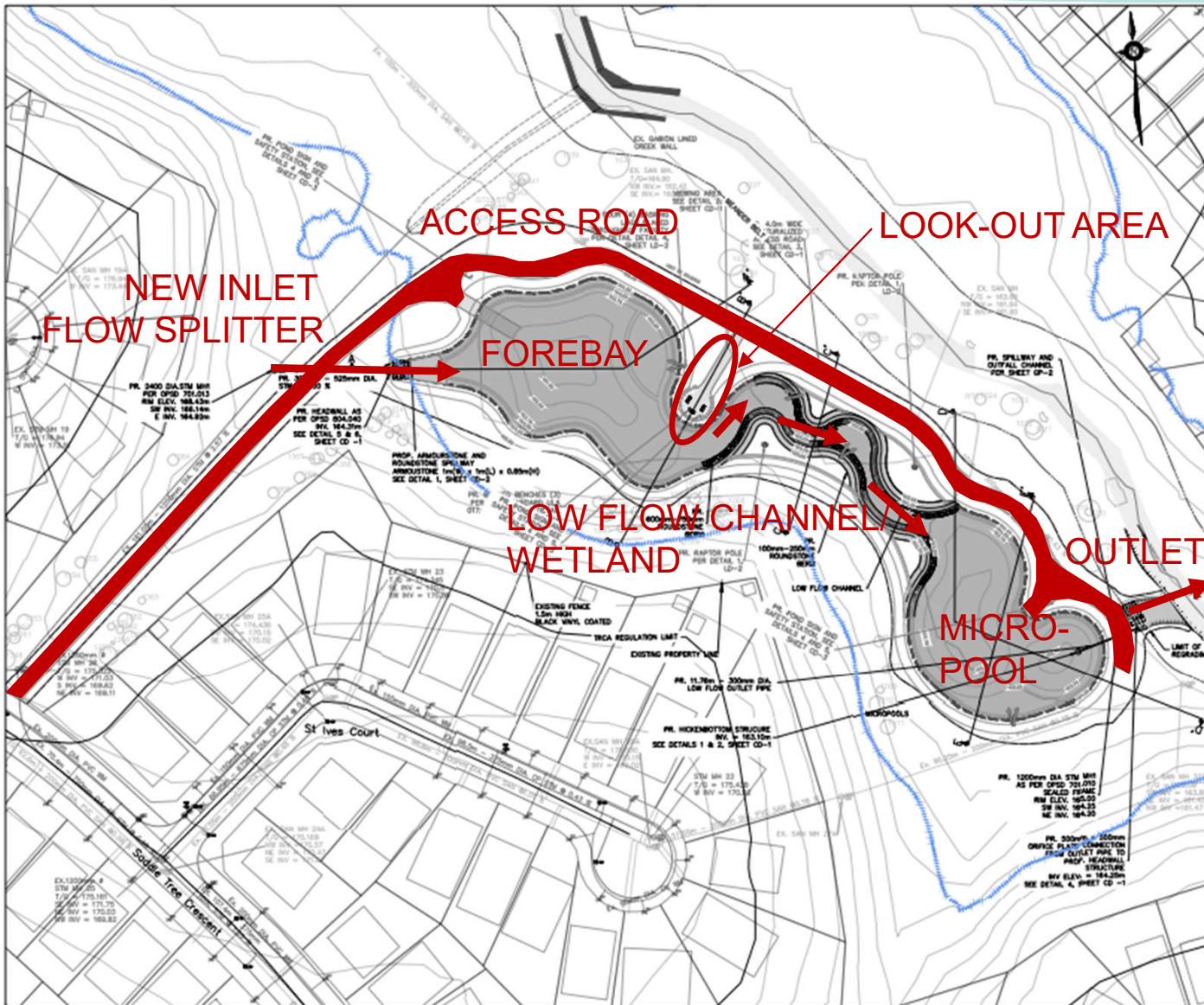
- Improved water quality through the removal of pollutants from stormwater



Existing Conditions – Site 12



Proposed Works – Site 12 (Wetland)



Design Elements

❖ Basic Design Elements

- Excavation
- Plantings
- Armourstone Retaining Walls
- Landscaped Seating Area
- SWM Shield Structures
- Sewer Realignment
- Operation and Maintenance Features
 - Access Roads
 - New Outlets/Channel



2018-01-24 12:52

Construction Expectations

- ❖ Noise, Dust, Mud, Vibrations
- ❖ Forest Drive/Martin Grove Road: 200-300 trucks per day during peak hauling times (6-8 weeks, intermittent)
- ❖ Working Hours: M-F, 7am-7pm
- ❖ Pre-construction Inspections of Homes:
 - Third Party inspection of home exterior and interior.
 - Used to confirm if possible damage is cause by construction (i.e. vibration)
 - Inspections are completed as permitted by homeowner
 - Completed for homes within close proximity to site.
- ❖ Closures to trails and sidewalks
- ❖ Tree Removals



Construction Expectations

Site 5 – Accumen Investment Pond

Access/Working Limits

- ❖ Main Truck Access from Martin Grove Road
- ❖ Site Access via Forest Drive/ Kaiser Drive
- ❖ Truck Staging on Kaiser Drive
- ❖ Avoid Traffic Near Elementary School
- ❖ Construction limited to site area



Construction Expectations

Site 8 – Harmonia Crescent Pond

Access/Working Limits

- ❖ Main Truck Access from Martin Grove Road
- ❖ Site Access via Forest Drive/ Harmonia
- ❖ Truck Staging on Harmonia Crescent
- ❖ Avoid Traffic Near Elementary School
- ❖ Construction limited to site area

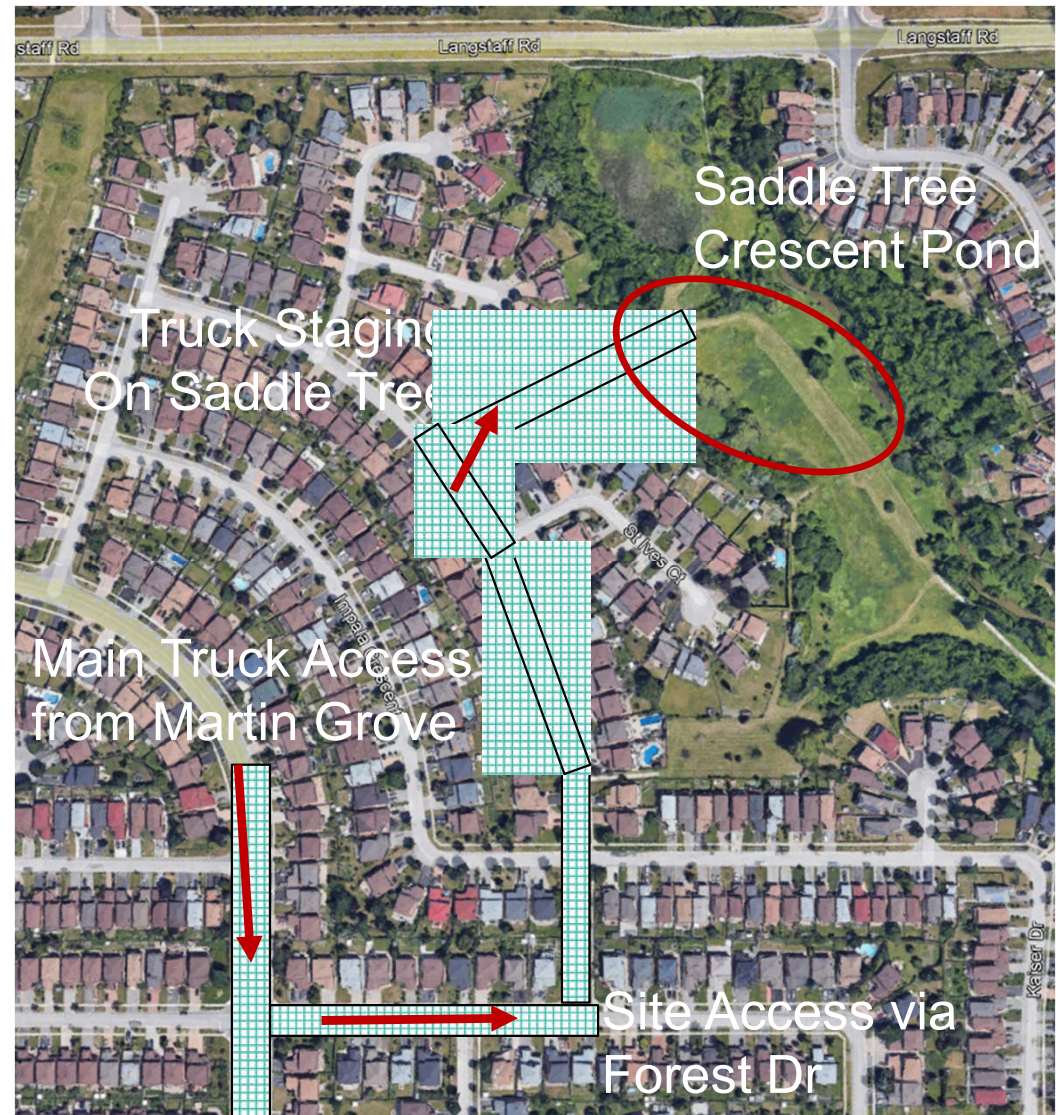


Construction Expectations

Site 12 – Saddle Tree Crescent Pond

Access/Working Limits

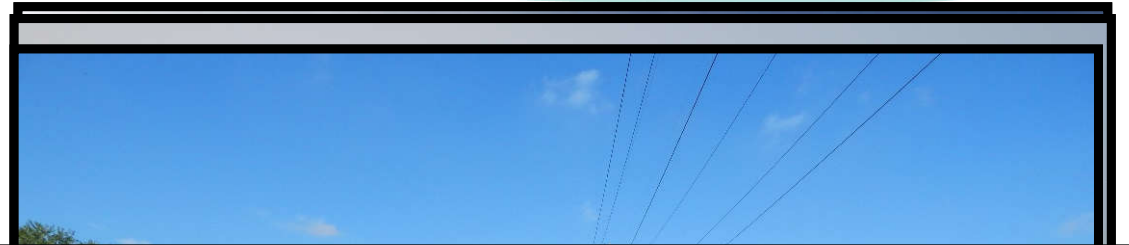
- ❖ Main Truck Access from Martin Grove Road
- ❖ Site Access via Forest Drive/ Saddle Tree
- ❖ Truck Staging on Saddle Tree Crescent
- ❖ Construction limited to site area



Finished Work

❖ Accumen Investments Pond

- Open Waterbody
- Enhanced
Trees/Landscaping
- Decorative Armoustone
Wall
- New Outlet and Chann
- Access Road



Finished Work

❖ Harmonia Crescent Pond

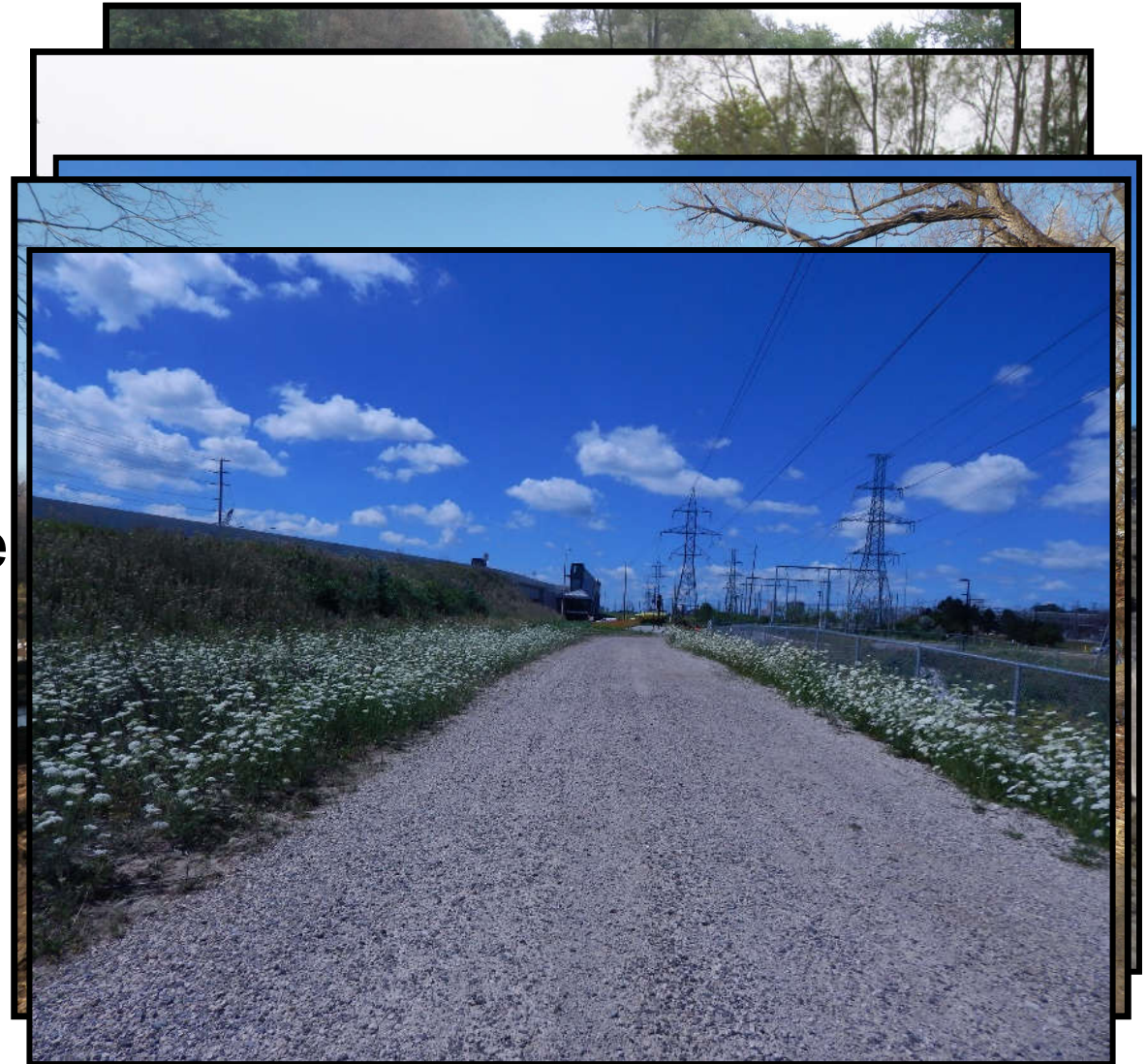
- Constructed Wetland
- Enhanced Trees/Landscaping
- Decorative Armourstone Walls
- Realigned Sanitary Sewer Line
- SWM Shield Structures
- Access Road



Finished Work

❖ Saddle Tree Crescent Pond

- Constructed Wetland
- Enhanced Trees/Landscaping
- Decorative Armourstone Walls
- Look-out Area
- New Spillway Channel
- Access Road





Project Duration

❖ General Construction Timing

- **Fall 2022 – November 2023**
- **Estimated to take 6-8 months to complete**

❖ Closer to Construction:

- City to provide updated notification on start dates for each area.
- Newsletter will be posted to City website

Project Contacts

Alan Manlucu, P.Eng
Project Manager

City of Vaughan
2141 Major Mackenzie Dr.
Vaughan, ON
L6A 1T1

D. (905) 832-8585 ext. 8468
E. Alan.manlucu@vaughan.ca



Dave Maunder, MSc. P.Eng.
Project Manager

Aquafor Beech Ltd.
2600 Skymark Ave, Bldg 6, Suite 202
Mississauga, Ontario
L4W 5B2

D (905) 629-0099 ext. 290
E maunder.d@aquaforbeech.com

