



Yonge Steeles Parkland Vision

Vaughan Yonge Steeles Centre Working Group Meeting

April 29, 2021





City Statistics

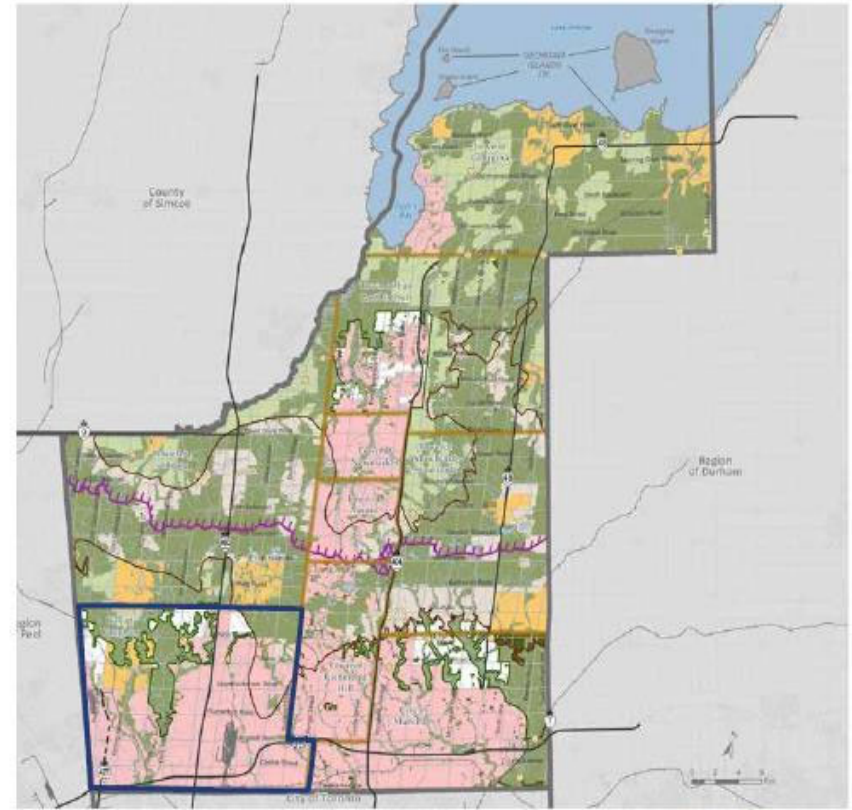
2021

City Snapshot

- **Total Area** 237.5 km²
- **Current Population:** 335,000
- **Population Projected:** 497,000 by 2041
- **Growth Areas:** VMC, Vaughan Mills Centre Secondary Plan, Promenade Centre Secondary Plan, Block 27, Block 41, Steeles West, Yonge/Steeles, Weston & 7 etc.

Features:

- Greenbelt, Oak Ridges Moraine
- Humber and Don River Corridors
- East West Connection to Hwy 407
- North South Connection to Hwy 400
- Hwy 427 Expansion Proposed
- Future GTAW Hwy

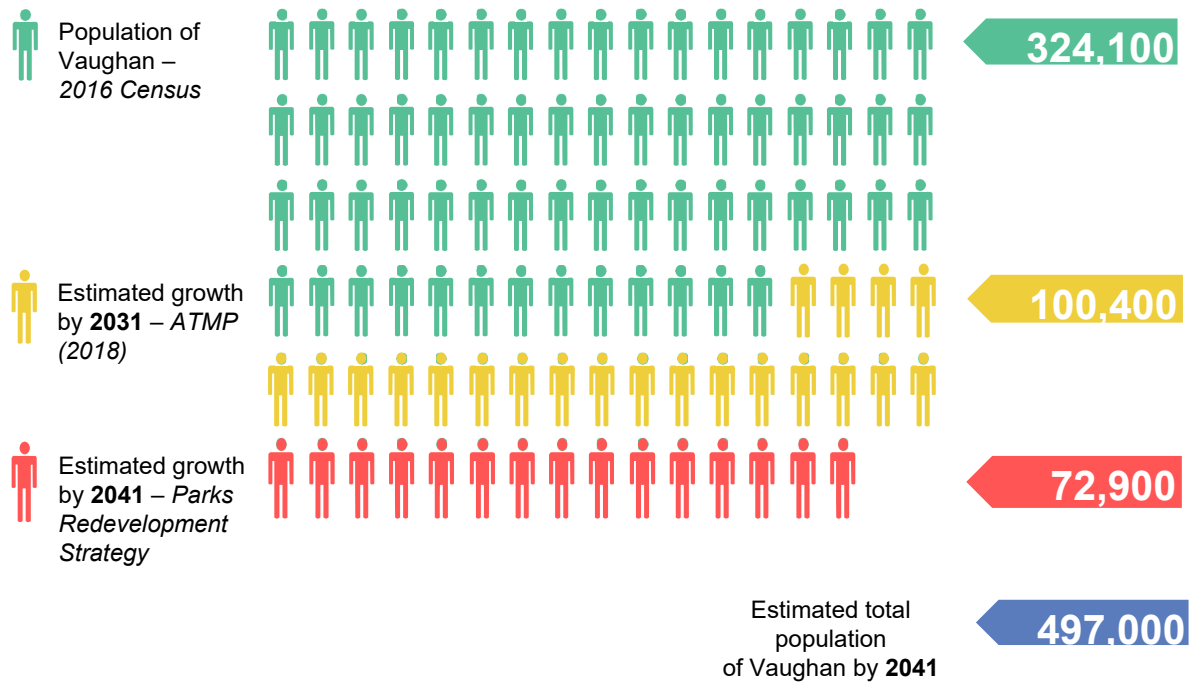


York Region



Vaughan Population & Estimated Growth

2016 - 2041



Note: Values are approximates based on available information and should be verified.



Traditional Parkland

Traditionally, a City of Vaughan Park is defined as a parcel of land, free of encumbrances, that has come to the city through the parkland dedication process, or through other means of acquisition (i.e. purchase, disposal), to be used by the public for active and passive recreation in residential neighborhoods.

Open Lawn Area



Playground



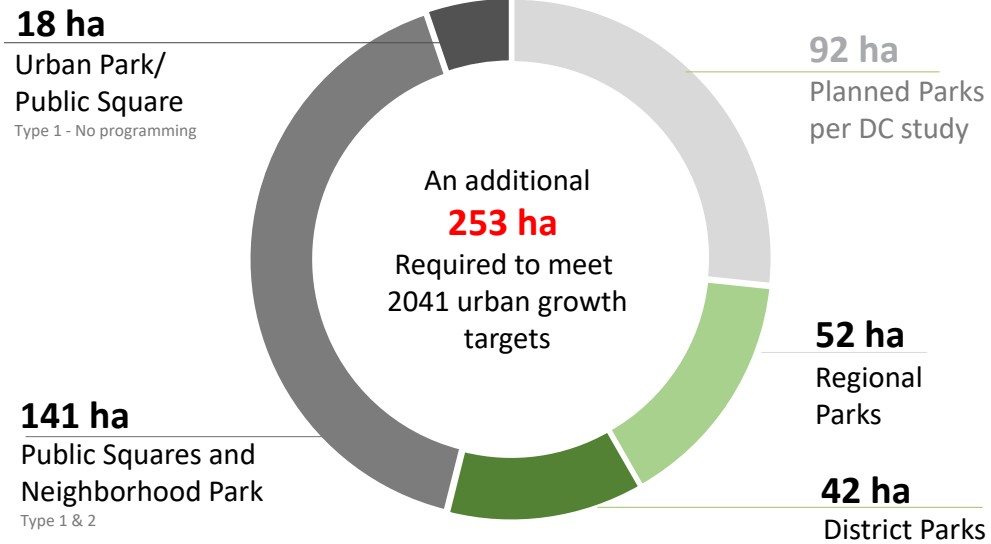
Large Sports Fields





Planned Parkland Supply

to meet 2041 urban growth targets



Current Parkland Supply as of 2021 – 635 ha – 228 Parks



Current Park and Open Space Definitions

Vaughan Official Plan, Section 7.3

Park Classification	Target Market	Size
Regional Park	Specialized events and amenities attract users from across the City	> 15 ha
District Park	Specialized events and amenities attract users from across the City	> 5 ha
Neighbourhood Park: Type I and II	Serves community located within a 10-minute walk of the park	0.75 to 5 ha
Urban Park	Serves areas of intensification	> 1 ha
Public Squares: Type I and II	Serves areas of intensification	0.2 to 1 ha
OS Classification	Target Market	Size
Greenways/corridors	All / Primarily linkages, small-scale activities	Min 25 m in width
Nature Reserves and Woodlots	Trails and rest areas	n/a
Cemeteries	Trails and rest areas	n/a



Active Together Master Plan

provision standards for parkland and recreational facilities

Key Recommendations

- # 1. Update Cash-in-Lieu By-Law
- # 2. Develop a Parkland Dedication By-law
- # 4. Do not accept undevelopable Open Space
- # 6. Review fixed unit rate for high density residential
- # 7. Explore acquisition and non-acquisition options
- # 8. Develop policies and practices to prioritize on-site parkland dedication
- # 9. Establish standards to direct the provision of non-traditional parks in areas of intensification
- # 97. Consider alternative funding and cost-sharing approaches

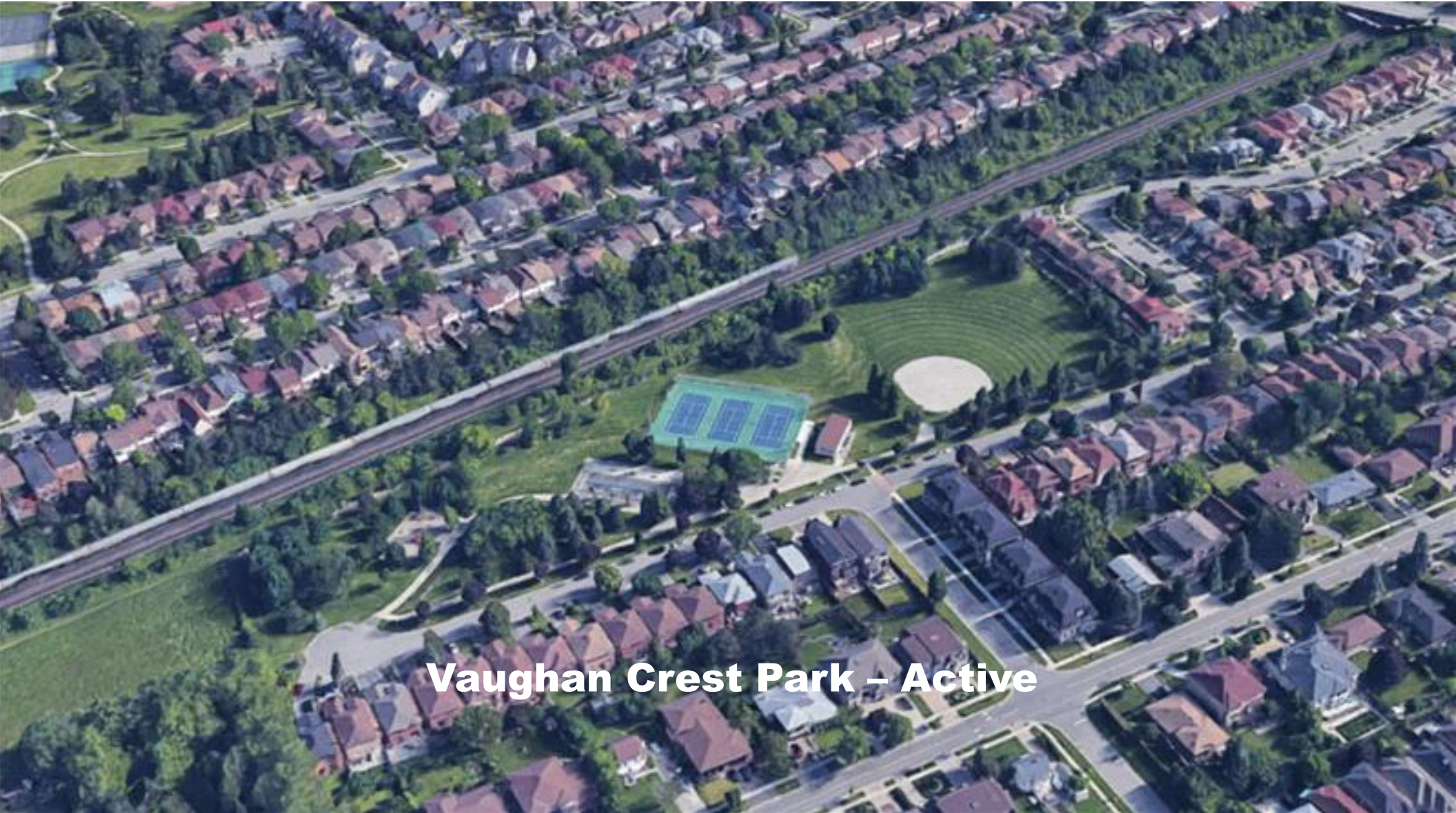


Block 1 Parkland Available

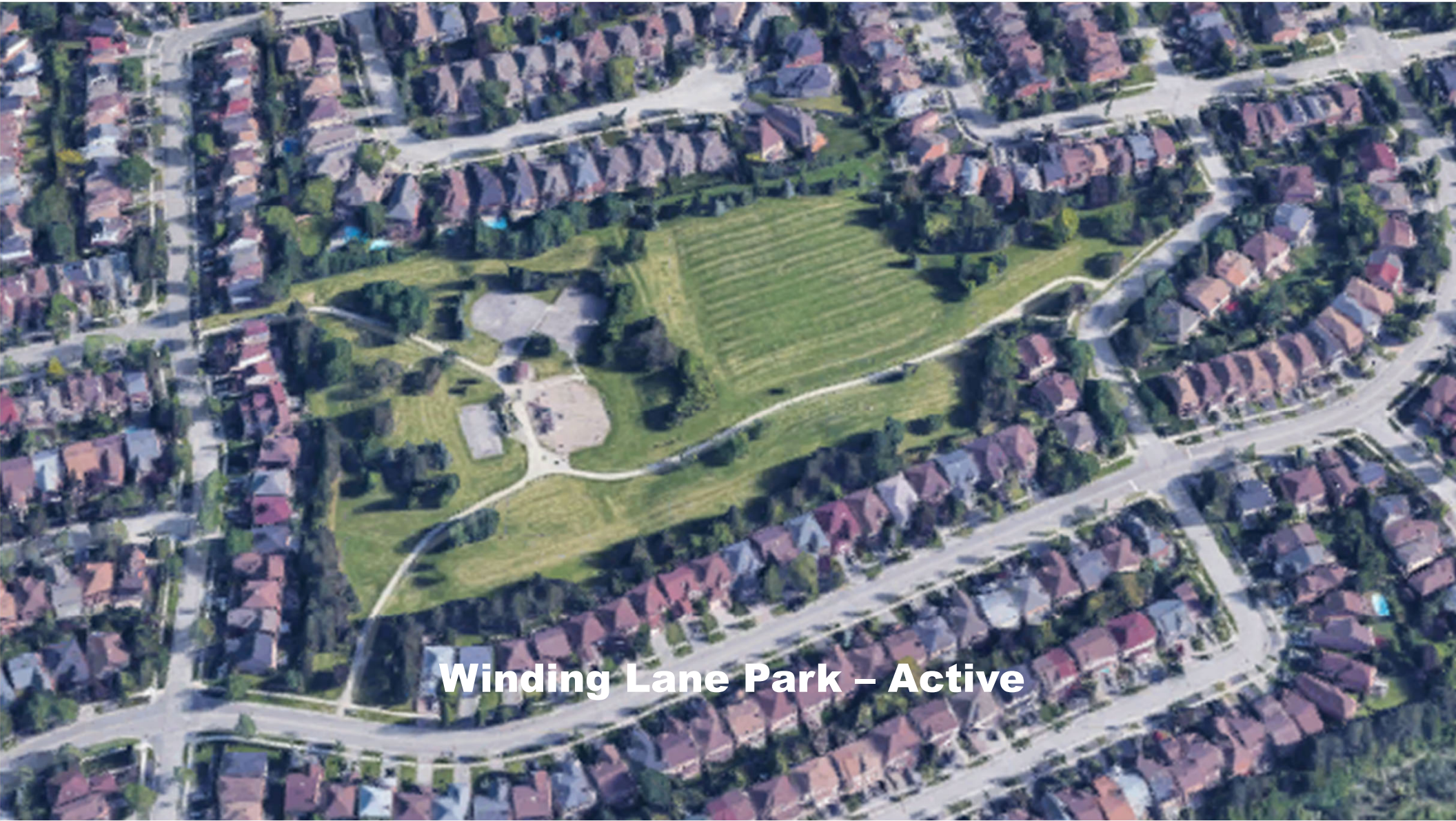
Total Active Parkland 22.77 Ha
 Estimated Population 20,320
 Parkland Provision Standard
 1.12 Ha/ 1000

Block 1 + YSCSP – Parkland 2015 (6.47 Ha)

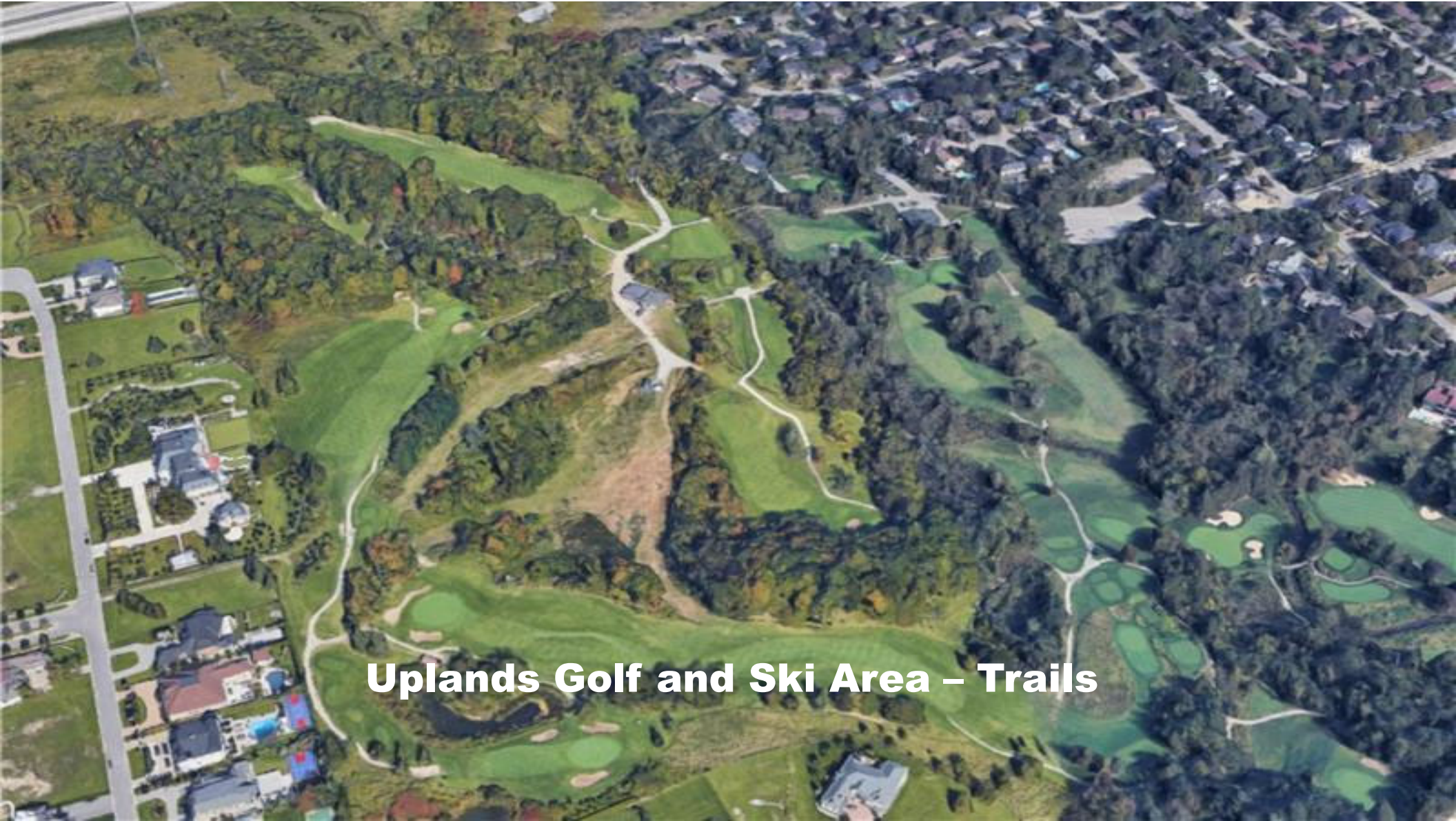
Total Park and Open Space 29.24 Ha
 Estimated Population 29,320-30,320
 Parkland Provision Standard
 0.96-0.99Ha/1000



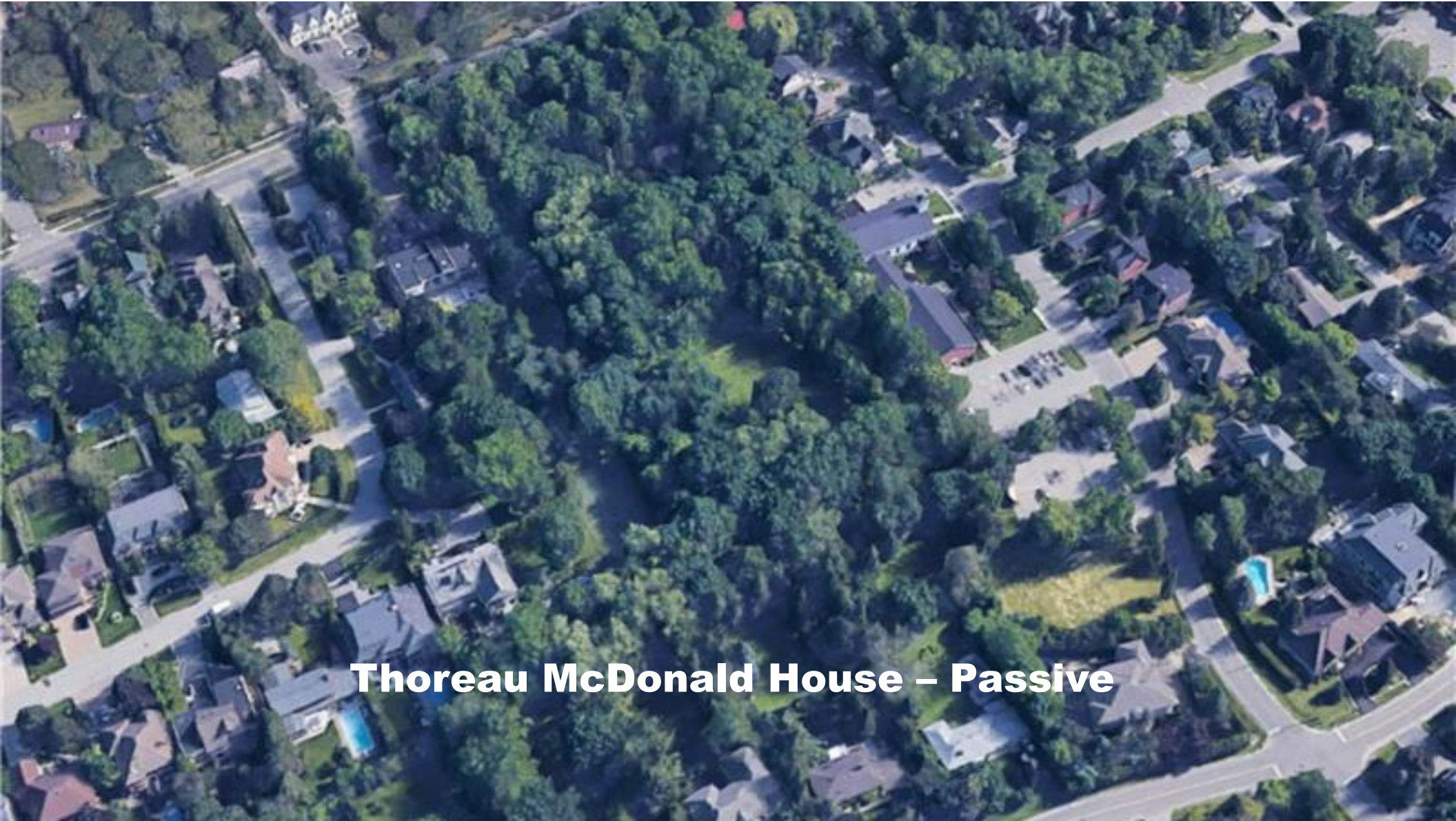
Vaughan Crest Park – Active



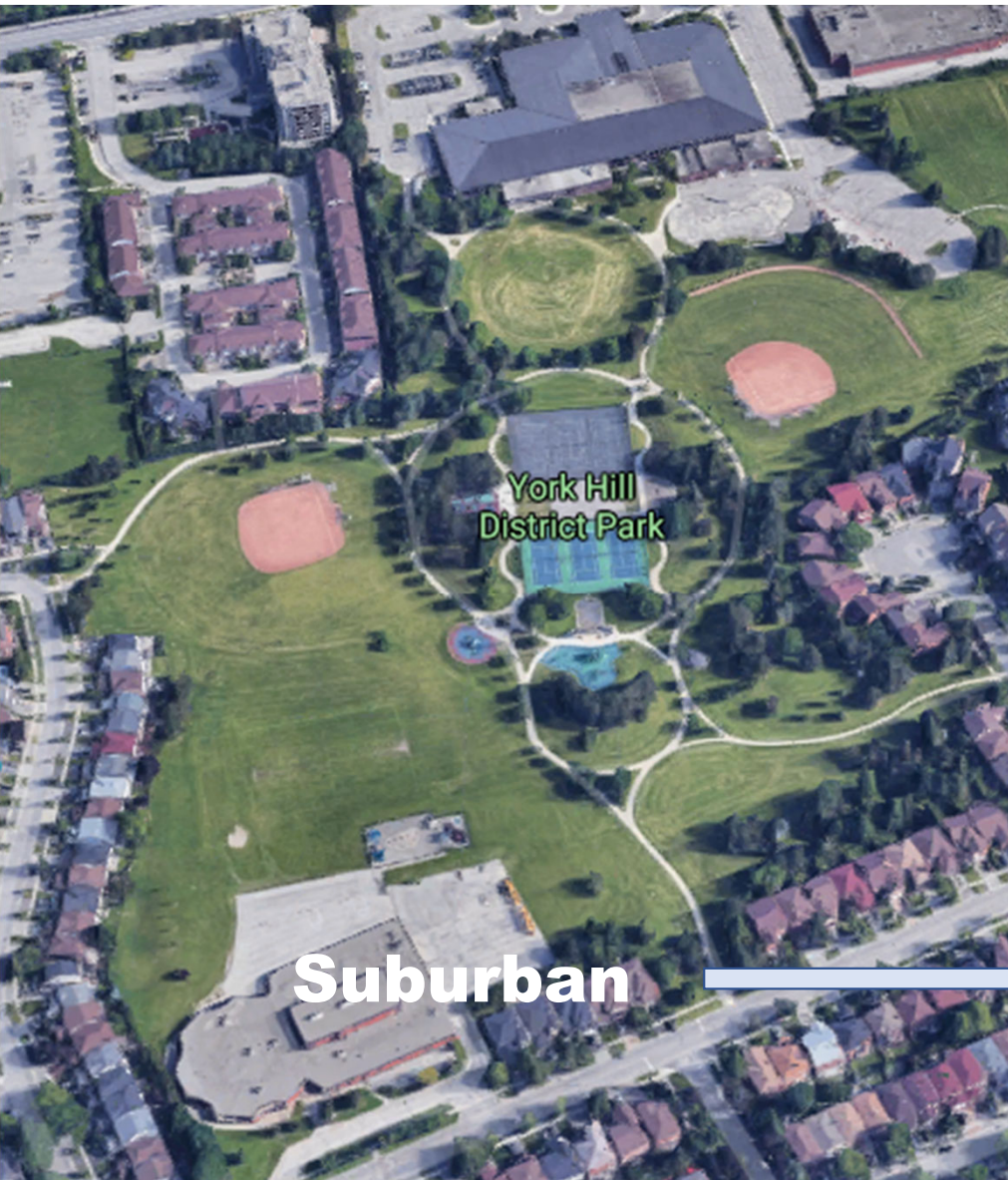
Winding Lane Park – Active



Uplands Golf and Ski Area - Trails



Thoreau McDonald House – Passive

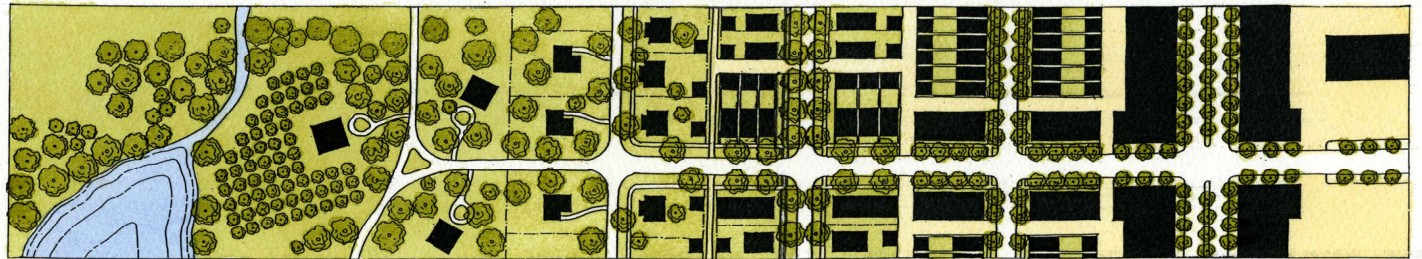




Vaughan in Transition

greenfield to intensification

What does this paradigm shift mean for Parks?

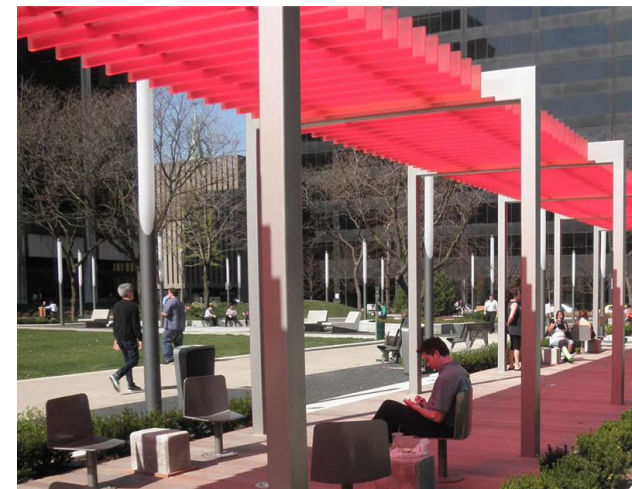
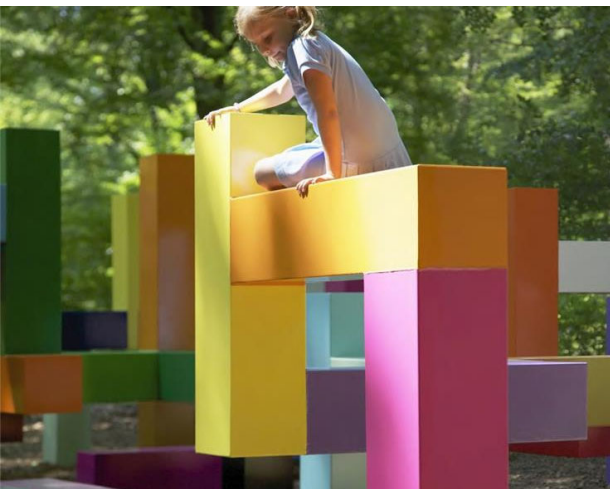


Intensification and Urban Programming

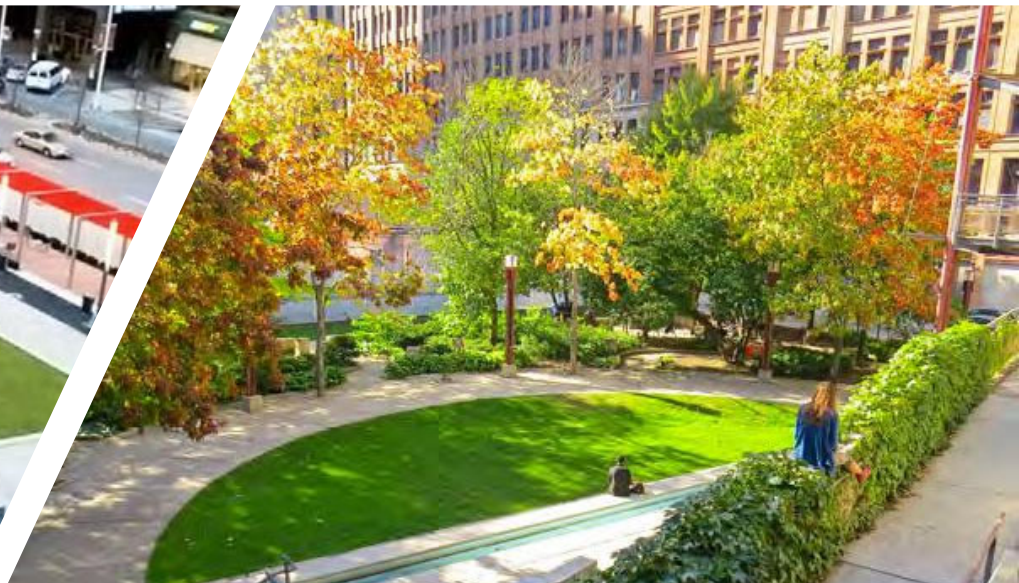
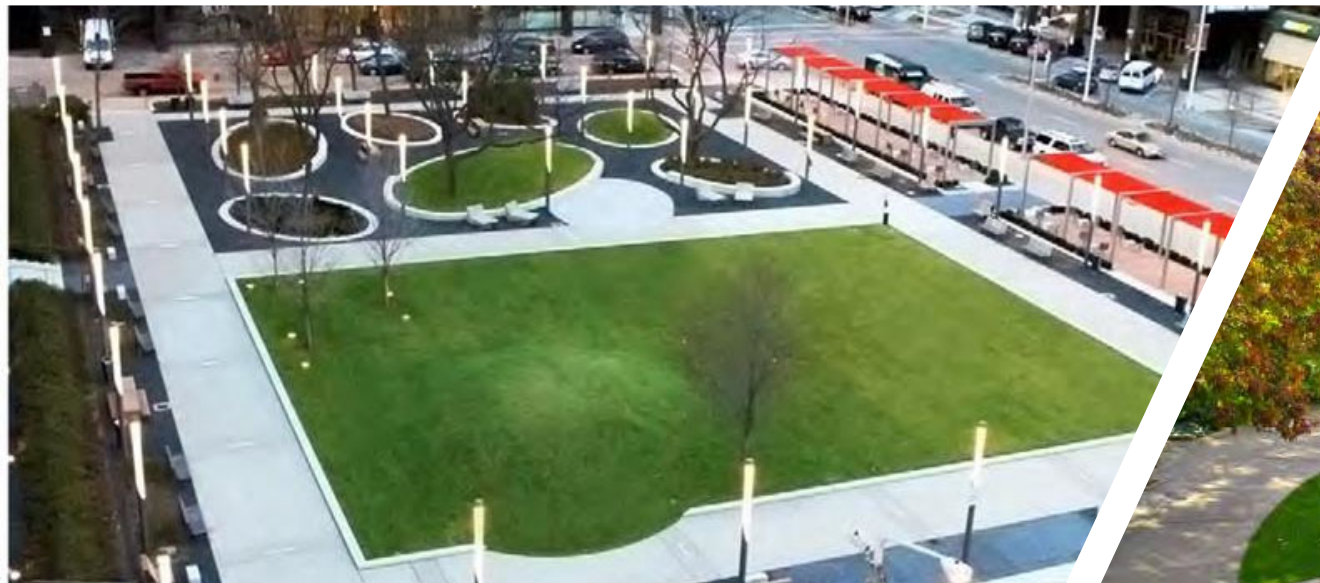
- Compact Design/Smaller Park Footprint
- More Formalized Seating
- More Intense Programming
- Increase in Hard Surfacing
- Reduced Turf Areas
- Increase in Ornamental Planting
- Focus on Trees
- Diverse Number of Users
- Increase in Frequency of use Throughout the Day
- Year-round Programming
- Higher Quality Design and Construction Requirements
- Increased Cost of Construction
- Increased Operations and Maintenance Cost
- Lower life Cycle / Increase in Repairs
- Increase in Special Events



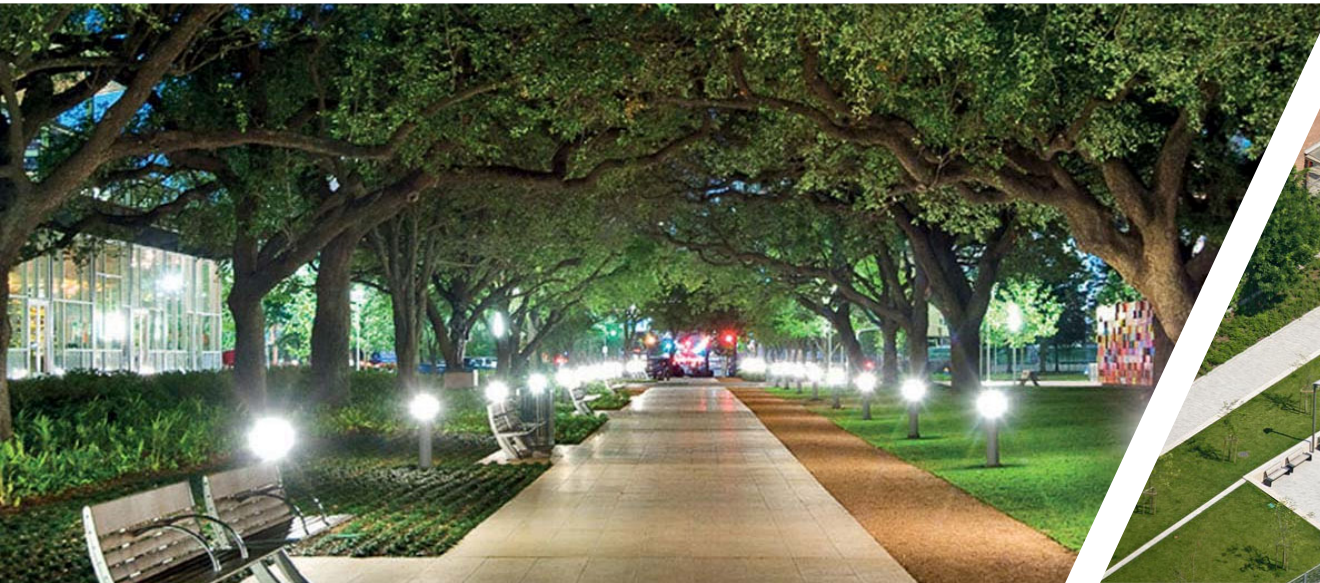


















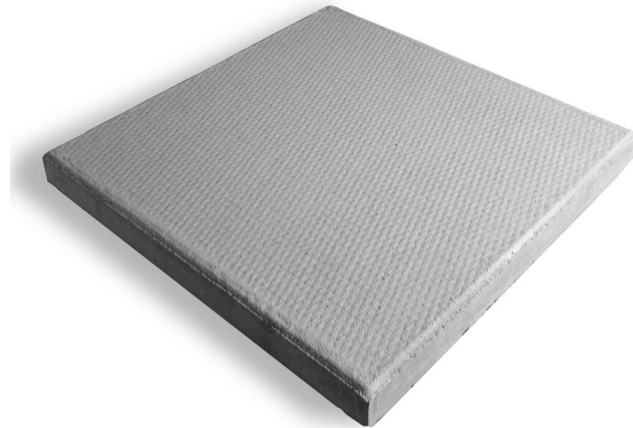
Cost Matters

balancing programming and costs



X 1

4 X

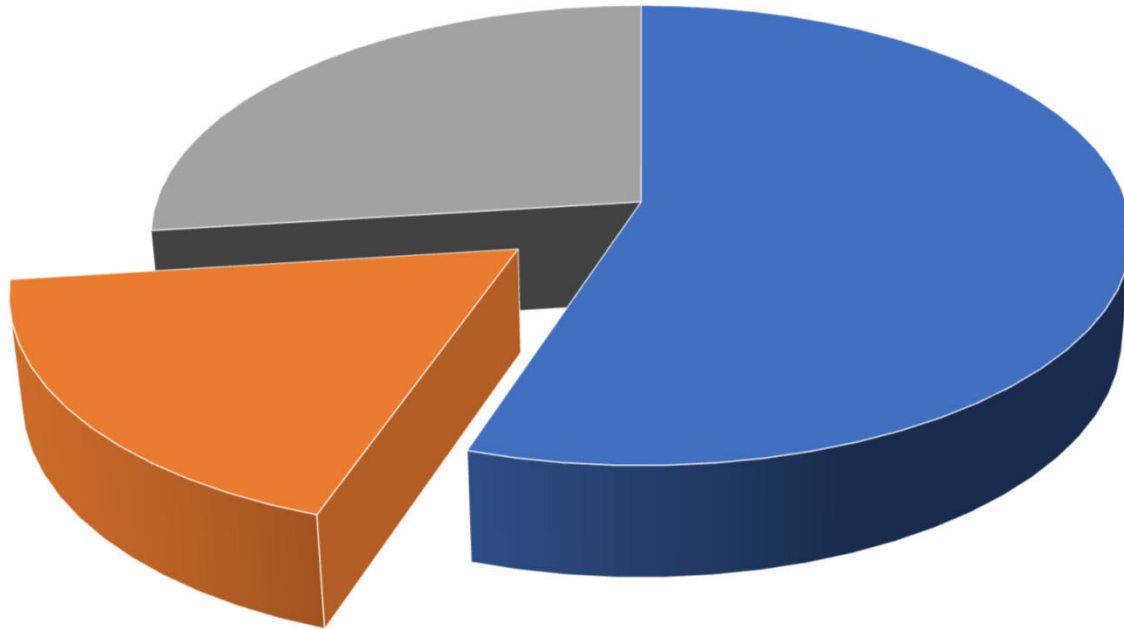




How will the City Develop Parkland in areas of Intensification ?



Parkland Funding Percentage



■ Development Charges (55%)

■ Section 37 enhancements (18%)

■ Local Park redevelopment (27%)



Comments and Questions?

